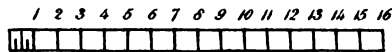
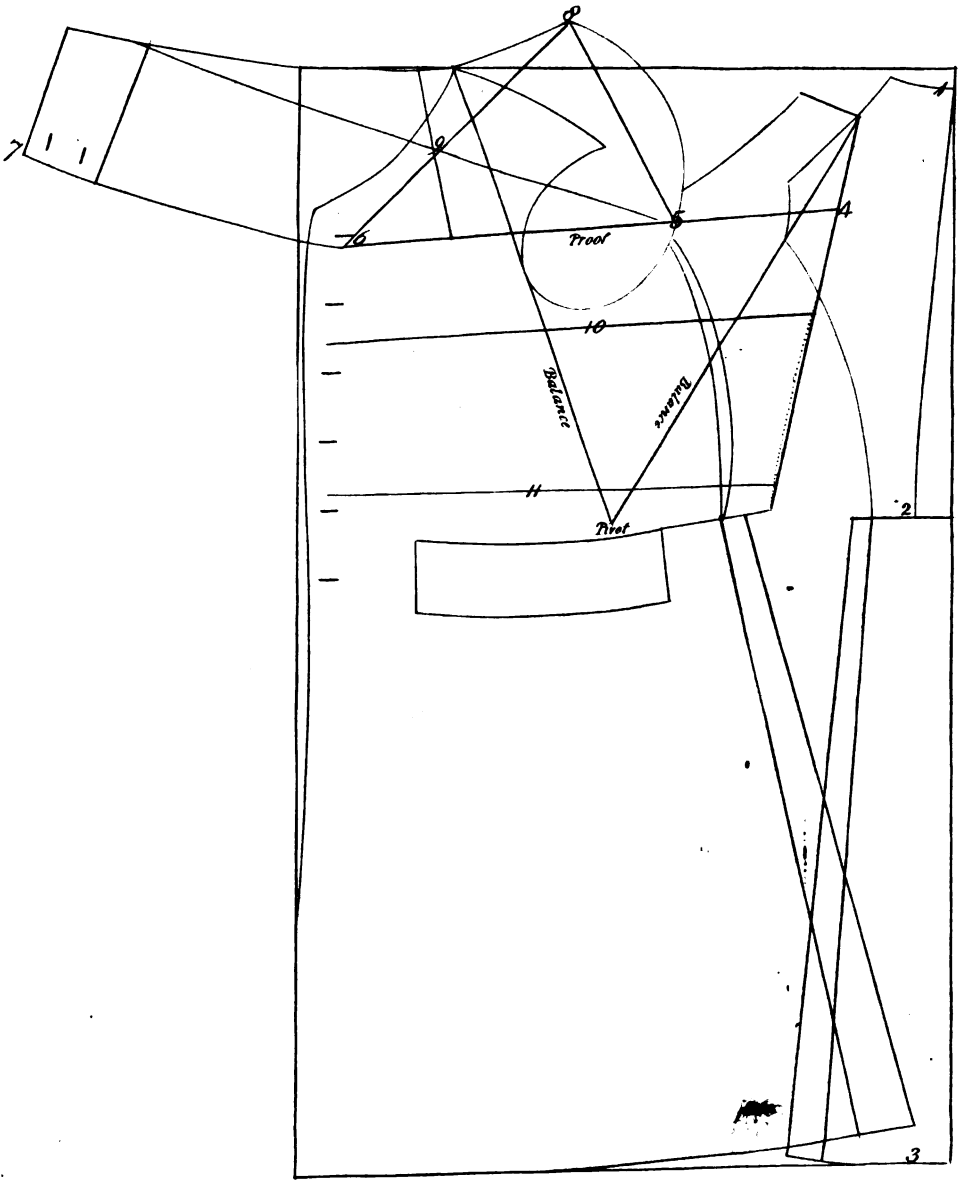


FRONTISPIECE.



Scale of Inches

SECTUM:

BEING THE

UNIVERSAL DIRECTORY

IN THE

ART OF CUTTING;

CONTAINING

UNERRING PRINCIPLES UPON WHICH EVERY GARMENT
MAY BE MADE TO FIT THE HUMAN SHAPE

With Ease and Elegance :

ILLUSTRATED BY

COPPER PLATE ENGRAVINGS,

And numerous accurate Tables of Calculations.

BY ROBERT BYFIELD.

LONDON:

PRINTED FOR H. S. MASON, HIGH STREET, BOROUGH,

And Sold by all Booksellers in Town and Country.

1825.



P R E F A C E.

IN this age of general improvement, when the art of **BOOKMAKING**, “in all its various branches,” is the source of extensive advantage, at least to the *Seller*, if not to the *Manufacturer* or the *Consumer*, it cannot be deemed unreasonable that a *Tailor* should descend from the shopboard, to turn out his *Work* in the shape of a **Royal Octavo**: and though the *Coxcomb* may exercise his puny wit, by observing that “it smells of the **Goose**,” it may be justly retorted that it does not stand alone in that respect, as many a conceited *Scribbler*, of the present day, has produced a volume calculated to prove his intimate acquaintance with that celebrated *Bird*.

But perhaps it may be said that it does not become one of my *Cloth* to make observations on the state of Literature, or on the character of Modern Authorship; and that, although I may be expert in the art of *Cutting*, I am not qualified to wield the satirical scissors. I will therefore attend to my own proper Business; and I heartily wish all other Cutters, of whatever description, would follow an example so becoming and so reasonable.

Whether in the political or the domestic circle, *Economy* appears to be the object of every class in this Country at the present day. The Art of Saving is doubtless one of great utility. It is equally so in every department of our concerns; and, as the article of *Clothing* is very important, it must be extremely desirable to blend fashion, taste, and economy, in its acquirement. It is admitted that the advantage of a good person is frequently lost, from the want of just proportion and symmetry in dress.

I am convinced, from an experience of thirty years' practice, and constant study, with unwearied and incessant application, that I have reduced my rules for measuring, cutting to shape, and calculating of quantities, to an unimpeachable standard; and

this upon such plain mathematical principles as leave no doubt with respect to fitting the shapes. This observation applies to every article of both male and female clothing.

The use and advantage of my present work to the **TRADE**, for whom it is principally designed, will be very apparent; and I am sure it needs no explanatory comment to unfold its utility to them, on whose judgment I confidently rely for approbation and encouragement.

To the **TAILOR**, the **SLOPSELLER**, and the **DRAPER**, it will be a great help and sure guide.—The *Tailor*, who may be asked by a Customer what quantity of stuff each article will require, to make various Liveries, or to furnish Children of different ages,—turns to his *Table*, according to the numbers and sizes, and answers to a fraction. To the *Draper*, who may not have a Tailor at hand, when similar inquiries are made of him, it will be found equally advantageous: and so also to the *Slopseller*, who may employ numerous work-people, on different sized articles, which he deals for in the wholesale. By merely a glance at his Tables, he knows the exact quantity necessary for each article.

On Plantations in the West Indies, or in America, where the Owners possess many Slaves, the quantity of Clothing requisite for them will be readily found, with the method of cutting out Woollens, Linens, Canvas and Osnabergs, to every possible advantage.

The *Plates* contain correct plans of the various and most difficult articles to cut; and which are fully explained in the body of the work. These plates will be of infinite service to the Trade, in particular, as well as to public bodies and private families.

The Work is so arranged that it describes every kind of garment, divided into sizes, each bearing an equal proportion, with a plan for laying down each size in the most accurate manner—together with the proper width and quantity required for each—including every different article which can be imagined of use in Clothing; with descriptive and explanatory Tables of sizes, and plans annexed: and I trust I have succeeded in rendering the useful ART OF ECONOMICAL CUTTING perfectly infallible.

My exertions will be seen by an impartial inspection of my Work, which I now leave to the

judgment of a liberal and discerning Public, who will honor me with patronage if I appear to deserve it. I have only to entreat that my pretensions may be candidly considered, and that I may be fairly rewarded according to my merit.

R. B.

London, September, 1825.

SECTUM:
BEING
THE UNIVERSAL DIRECTORY
IN THE
ART OF CUTTING.

B

GENTLEMEN'S GIG OR BOX COATS.

(PLATE VIII.)

SIZES.	1	2	3	4	5	6	7
	Inches	Inches	Inches	Inches	Inches	Inches	Inches.
Length of the Back,.....	46	48	50	52	54	56	58
Half-width of the Back, between the } Shoulders.....	8 $\frac{1}{4}$	8 $\frac{1}{2}$	8 $\frac{3}{4}$	9	9 $\frac{1}{4}$	9 $\frac{1}{2}$	10
Length of Sleeve, from the middle } of the Back to the Elbow....	20 $\frac{1}{2}$	21 $\frac{1}{4}$	22	22 $\frac{3}{4}$	23 $\frac{1}{2}$	24 $\frac{1}{4}$	25
Full length of the Sleeve, including } the cuff.....	31 $\frac{1}{2}$	32 $\frac{1}{2}$	33 $\frac{1}{2}$	34 $\frac{1}{2}$	35 $\frac{1}{2}$	36 $\frac{1}{2}$	37 $\frac{1}{2}$
Width of Sleeve at top from point } to point, F.....	9 $\frac{1}{2}$	10	10 $\frac{1}{2}$	11	11 $\frac{1}{2}$	12	12 $\frac{1}{2}$
Width of the small of Sleeve.....	8 $\frac{1}{2}$	8 $\frac{3}{4}$	9	9 $\frac{1}{4}$	9 $\frac{1}{2}$	9 $\frac{3}{4}$	10
Width of the Breast	9	9 $\frac{1}{2}$	10	10 $\frac{1}{2}$	11	11 $\frac{1}{2}$	12
Half round the Breast	25	26	27	28	29	30	31
Half round the bottom of the Coat..	30	32	34	36	38	40	42
Quantity each size will take.....	Yards 3	Yards 3 $\frac{1}{8}$	Yards 3 $\frac{1}{8}$	Yards 3 $\frac{1}{4}$	Yards 3 $\frac{3}{4}$	Yards 4	Yards 4 $\frac{1}{4}$

GENTLEMEN'S GIG OR BOX COATS.

THESE Coats are cut from the Cloth called Witney, from the name of the Place where it is manufactured. Its width is generally from 49 to 52 Inches. There are different qualities of this, as well as of other Cloths. The Coats are usually made with two Capes, for which the above quantities are calculated: the top Cape is to be twelve, and the bottom fifteen Inches deep. There is a Scale for Capes of all sizes, and to suit every description of Garments. They run from 7 to 27 Inches deep, properly divided. (*See Plate I.*) These Coats are made with three tabs on each side, to button over close, and one on the Collar. The 4th size Collar must be cut five inches deep, and twenty-four inches long: and the other sizes must be varied an inch. The Collar should be lined with Manchester Velvet. To make these Coats complete, they should be bound with Silk Galloon, and have Silk Buttons.

MEN'S DUFFLE COATS.

SIZES.	1	2	3	4	5	6	7
	Inches.	Inches.	Inches.	Inches.	Inches.	Inches.	Inches.
Length of the Back.....	45	47	49	51	53	55	57
Half-width of the Back between the } Shoulders.....	$8\frac{1}{4}$	$8\frac{1}{2}$	$8\frac{3}{4}$	9	$9\frac{1}{4}$	$9\frac{1}{2}$	10
Length of the Sleeve, from the mid- } dle of the Back to the Elbow ..	$20\frac{1}{2}$	$21\frac{1}{4}$	22	$22\frac{3}{4}$	$23\frac{1}{2}$	$24\frac{1}{4}$	25
Full length of the Sleeve, including } the Cuff.....	$31\frac{1}{2}$	$32\frac{1}{2}$	$33\frac{1}{2}$	$34\frac{1}{2}$	$35\frac{1}{2}$	$36\frac{1}{2}$	$37\frac{1}{2}$
Width of the Sleeve at top, from } point to point.....	$9\frac{1}{2}$	10	$10\frac{1}{2}$	11	$11\frac{1}{2}$	12	$12\frac{1}{2}$
Width of the Small of Sleeve... ..	8	$8\frac{1}{2}$	9	$9\frac{1}{2}$	10	$10\frac{1}{4}$	$10\frac{1}{2}$
Width of the Breast.....	9	$9\frac{1}{2}$	10	$10\frac{1}{2}$	11	$11\frac{1}{2}$	12
Half round the Breast.....	24	25	26	27	28	29	30
Half round the bottom of the Coat..	27	29	31	33	35	37	39
	Yards.	Yards.	Yards.	Yards.	Yards.	Yards.	Yards.
Quantity of 32 inch Duffle each } size will take.....	$3\frac{7}{8}$	$4\frac{1}{8}$	$4\frac{1}{4}$	$4\frac{7}{8}$	$4\frac{5}{8}$	$4\frac{7}{8}$	$5\frac{1}{4}$

MEN'S DUFFLE COATS.

THE Pieces of Duffle generally run from sixty to sixty-two yards long, and vary sometimes an inch or two in width. When you have calculated your quantity, if it is necessary to cut an odd Coat, take off the length of the back before you fold the Piece; as they are cut without a back Seam; then cut off the quantity for the backs first, and the foreparts will drop the bottom of one into the sye of the other. The Cape and inside Sleeve will come out of the piece left from the side of the forepart. The Cape to be twelve inches deep.

These Coats are generally worn by Countrymen, such as Farmers' Servants, &c. They are a loose Coat with two tabs on each side, a stand-up Collar, &c.

This Rule will serve also to cut Coats for the West Indies, as they are frequently wanted there, and are very well adapted for that purpose.

MEN'S FLUSHING COATS.

SIZES.	3	4	5	6
	Inches.	Inches.	Inches.	Inches.
Length of the Back.....	$47\frac{1}{2}$	50	$52\frac{1}{2}$	55
Half-width of the Back, between the } Shoulders.....	9	$9\frac{1}{2}$	10	$10\frac{1}{2}$
Length of the Sleeve, from the middle of } the Back to the Elbow.. }	22	$22\frac{3}{4}$	$23\frac{1}{2}$	$24\frac{1}{4}$
Full Length of the Sleeve, including the } Cuff.....	$33\frac{1}{2}$	$34\frac{1}{2}$	$35\frac{1}{2}$	$36\frac{1}{2}$
Width of the Sleeve, at top from point } to point.....	11	$11\frac{1}{2}$	12	$12\frac{1}{2}$
Width of the small of Sleeve.....	9	$9\frac{1}{2}$	10	$10\frac{1}{2}$
Width of the Breast..	$11\frac{1}{2}$	12	$12\frac{1}{2}$	13
Half round the Breast..	26	27	28	29
Half round the bottom of the Coat... .	34	36	38	40
Length of the Collar.....	22	23	24	25
Depth of the Collar.....	$5\frac{1}{4}$	$5\frac{1}{2}$	$5\frac{3}{4}$	6
	Yards.	Yards.	Yards.	Yards.
Quantity each size will take..	$2\frac{5}{8}$	$2\frac{3}{4}$	$2\frac{1}{2}$	$3\frac{1}{8}$

MEN'S FLUSHING COATS.

CALCULATE your quantity before you begin to cut, and suit your sizes according to the length of the Piece. First, lay down the forepart to your right hand, with the crease towards you; then the middle of the back to the crease, and the Sleeve by the side of the back, and you will find the Coat come out complete.

These Coats are double-breasted. The width of the breast for the 3rd size must be eleven inches, and must be increased one inch for each additional size. The Buttons to be set six inches from the edge. They are to be buttoned half-way down, and the Lappell to be well kept up, that they may button over closely. The Sleeve must be cut as wide at the bottom as at the small, to give room for tucking one hand in the other. They have no cuffs. A yard and a half of $\frac{5}{8}$ Baize will be a sufficient quantity to line the Sleeves and Body about half-way down.

WATCHMEN'S COATS.

THESE may be cut by the same Rule as the Gig Coats: they are generally cut from white Foul-weather. The best width is thirty-six inches. It is a stout milled Kersey, manufactured in Yorkshire.

Directions for laying down the Patterns.

When the Piece is folded, lay the bottom of the forepart to the right hand, and the top of the outside Sleeve to the bottom, then the hand of the inside Sleeve will meet the hand of the outside Sleeve, with the hind seam of the inside to the side seam of the forepart, and the shoulder of the next forepart will meet the slope of the inside sleeve: and so the Patterns must be reversed every time. When you have cut the proper quantity of forepart and sleeves, then cut the back—(no seam in the back)—lay the bottom of the back to the right, and the shoulder of the second

lay will meet the shoulder of the first. What comes from the side of the back will make half the cuffs and collar ; the capes, two out of the width, to be sixteen inches deep. Three tabs to be on each side, and the collar as directed in the Gig Coats.

The 5th Size will take five yards. This quantity will make the Coat full, and fit for the purpose.

MEN'S SURTOUTS.

SIZES.	1	2	3	4	5	6	7
	Inches.	Inches.	Inches.	Inches.	Inches.	Inches.	Inches.
Length of the Waist.....	16	16½	17	17½	18	18½	19
Full length of the Surtout.....	45	47	49	51	53	55	57
Half-width of the Back, between the Shoulders.....	6	6¼	6½	6¾	7	7¼	7½
Length of Sleeve, from the middle of the Back to the Elbow... }	19	19¾	20½	21¼	22	22¾	23½
Full length of the Sleeve, including the cuff.....	31½	32½	33½	34½	35½	36½	37½
Width of Sleeve at top from point to point, F.....	9½	9¾	10	10¼	10½	11	11½
Width of the small of Sleeve.....	6¾	7	7¼	7½	7¾	8	8¼
Half round the Breast	18	19	20	21	22	23	24
Half round the Waist	17	18	19	20	21	22	23
	Yards.	Yards.	Yards.	Yards.	Yards.	Yards.	Yards.
Quantity each size will take of 27 Inch width.....	4½	4¼	4¾	4¾	5	5½	6

MEN'S SURTOUTS.



THIS is a great Coat or Upper Garment. The quantity necessary for each is shewn in the annexed Table, and the plan for laying them down in Plate IX. and therefore no further explanation of this article is necessary.

There is another description of Coats called **Witney Surtouts**, made of the same article : they are single-breasted, and cut by the annexed Table. The difference will be to cut the 5th size by the 6th size pattern, and so in proportion for the others, as they require to be cut easy, because they shrink when wetted. These Surtouts will take the same quantity of Cloth as the Gig Coats; and they must be made with one Cape, 16 inches deep, cross flaps, and Pockets on the outside. The Pockets to be faced with the same, and the Shoulders to be filled.

MEN'S LAPPEL COATS.

(PLATE X.)

SIZES.	1	2	3	4	5	6
	Inches.	Inches.	Inches	Inches.	Inches.	Inches.
Length of the Waist.....	16	16½	17	17½	18	18½
Full length of the Coat.....	35	36	37	38½	40	41½
Half-width of the Back between the } Shoulders.....	5¾	6	6¼	6½	6¾	7
Length of the Sleeve, from the mid- } dle of the Back to the Elbow ..	19	19¾	20½	21¼	22	22¾
Full length of the Sleeve, including } the Cuff.....	31	32	33	34	35	36
Width of the Sleeve at top, from } point to point.....	9¼	9½	9¾	10	10¼	10½
Width of the Small of Sleeve... ..	6½	6¾	7	7¼	7½	7¾
Half round the Breast.....	17½	18	18½	19½	20½	21½
Half round the Waist.....	16½	17	17½	18½	19½	20½
	Yards.	Yards.	Yards.	Yards.	Yards.	Yards.
Quantity each size will take of 56½ } Inch width.....	1⅝	1⅞	1½	1⅝	1⅞	2

MEN'S LAPPEL COATS.

It is unnecessary to give any further explanation of these Coats, as the same method of laying down will do for all sizes. The flaps and pockets must, of course, be made according to the taste and convenience of the Wearer.

Directions to Cut by Measure.

First cut off the back, then mark out the forepart; lay the side seam of the back to the side seam of the forepart; take one third and a sixth of the third of the size of the breast, across from the back seam;—about two inches above the waist, (which is called the *pivot* line,) carry the line to the top of the back, then carry the same line to the top of the forepart, and that will bring the Coat to a true balance. Take two thirds of the size of the breast, from the back, (which is called the *proof* line,) for the front of the sye; and this proportion will fit any regular-grown man.

Supposing this to be cut upon a scale of eighteen inches, then half round the breast will be eighteen inches—the *pivot* line will be seven, and the *proof* line twelve. In the same proportion every Coat may be cut, in the regular way.

MEN'S LAPPEL COATEES, OR SHORT COATS,

SIZES.	1	2	3	4	5	6
	Inches.	Inches.	Inches.	Inches.	Inches.	Inches.
Length of the Waist.....	15½	16	16½	17	17½	18
Full length of the Coatee.....	31	32	33	34	35	36
Half-width of the Back, between } the Shoulders.....	5¾	6	6¼	6½	7	7¼
Length of the Sleeve, from the mid- } dle of the Back to the Elbow... }	19	19¾	20½	21¼	22	22¾
Full Length of the Sleeve, including } the Cuff.....	30½	31½	32½	33½	34½	35½
Width of the Sleeve, at top from } point to point.....	9½	9¾	10	10¼	10½	11
Width of the small of Sleeve.....	6¾	7	7¼	7½	7¾	8
Half round the Breast..	18	18½	19	20	21	22
Half round the Waist.....	17	17½	18	19	20	21
	Yards.	Yards.	Yards.	Yards.	Yards.	Yards.
Quantity each size will take of 27 } Inch width.....	3½	3⅝	3⅞	4	4¼	4½

MEN'S LAPPEL COATEES,**OR****SHORT COATS.**

THIS Garment is generally made of $\frac{3}{4}$ Fustian or Beaverteen. They are sometimes lined, in the body and sleeves, with the same colour, but of inferior quality; and if they are lined they will require half a yard less in quantity. The Skirt should be cut rather full; as they are generally worn by working men.

MEN'S SINGLE-BREADED FROCK COATS.

SIZES.	1	2	3	4	5	6
	Inches.	Inches.	Inches.	Inches.	Inches.	Inches.
Length of the Waist.....	16	16 $\frac{1}{2}$	17	17 $\frac{1}{2}$	18	18 $\frac{1}{2}$
Full length of the Coat.....	39	41	43	45	47	49
Half-width of the Back, between } the Shoulders.....	5 $\frac{3}{4}$	6	6 $\frac{1}{4}$	6 $\frac{1}{2}$	7	7 $\frac{1}{2}$
Length of the Sleeve, from the mid- } dle of the Back to the Elbow... }	19	19 $\frac{3}{4}$	20 $\frac{1}{2}$	21 $\frac{1}{4}$	22	22 $\frac{3}{4}$
Full length of the Sleeve, including } the Cuff.....	30 $\frac{1}{2}$	31 $\frac{1}{2}$	32 $\frac{1}{2}$	33 $\frac{1}{2}$	34 $\frac{1}{2}$	35 $\frac{1}{2}$
Width of the Sleeve, at top from } point to point.....	9 $\frac{1}{2}$	9 $\frac{3}{4}$	10	10 $\frac{1}{4}$	10 $\frac{1}{2}$	11
Width of the small of Sleeve.....	6 $\frac{3}{4}$	7	7 $\frac{1}{4}$	7 $\frac{1}{2}$	7 $\frac{3}{4}$	8
Half round the Breast.....	18	18 $\frac{1}{2}$	19	20	21	22
Half round the Waist.....	17	17 $\frac{1}{2}$	18	19	20	21
	Yards.	Yards.	Yards.	Yards.	Yards.	Yards.
Quantity each size will take of 27 } Inch width.....	4	4 $\frac{1}{4}$	4 $\frac{1}{2}$	4 $\frac{3}{4}$	5 $\frac{1}{8}$	5 $\frac{5}{8}$

**MEN'S SINGLE-BREASTED
FROCK COATS.**

THIS is a Garment which is frequently worn by Coachmen and Grooms.

The quantities for each size, as given in the annexed Table, will make the Coat full and handsome.

These Frock Coats are cut straight, with cross flaps. The Pockets are faced, and the Shoulders are filled with the same.

D

MEN'S SINGLE-BREASTED COATEES.

SIZES.	1	2	3	4	5	6	7
	Inches	Inches.	Inches.	Inches.	Inches.	Inches	Inches.
Length of the Waist.....	15 $\frac{1}{2}$	16	16 $\frac{1}{2}$	17	17 $\frac{1}{2}$	18	18 $\frac{1}{2}$
Full length of the Coatee	31	32	33	34	35	36	37
Half-width of the Back, between the } Shoulders.....	5 $\frac{1}{2}$	6	6 $\frac{1}{4}$	6 $\frac{1}{2}$	6 $\frac{3}{4}$	7	7 $\frac{1}{2}$
Length of Sleeve, from the middle } of the Back to the Elbow....	19	19 $\frac{3}{4}$	20 $\frac{1}{2}$	21 $\frac{1}{4}$	22	22 $\frac{3}{4}$	23 $\frac{1}{2}$
Full length of the Sleeve, including } the cuff.....	30 $\frac{1}{2}$	31 $\frac{1}{2}$	33 $\frac{1}{2}$	33 $\frac{1}{2}$	34 $\frac{1}{2}$	35 $\frac{1}{2}$	36 $\frac{1}{2}$
Width of Sleeve at top from point } to point, F.....	9 $\frac{1}{2}$	9 $\frac{3}{4}$	10	10 $\frac{1}{4}$	10 $\frac{1}{2}$	11	11 $\frac{1}{2}$
Width of the small of Sleeve.....	6 $\frac{3}{4}$	7	7 $\frac{1}{4}$	7 $\frac{1}{2}$	7 $\frac{3}{4}$	8	8 $\frac{1}{4}$
Ha'f round the Breast	18	18 $\frac{1}{2}$	19	20	21	22	23
Half round the Waist	17	17 $\frac{1}{2}$	18	19	20	21	22
	Yards.	Yards.	Yards	Yards.	Yards.	Yards.	Yards
Quantity each size will take of 27 } Inch width.....	3 $\frac{5}{8}$	3 $\frac{1}{6}$	4	4 $\frac{1}{4}$	4 $\frac{1}{2}$	4 $\frac{3}{4}$	5 $\frac{1}{8}$

MEN'S SINGLE-BREASTED COATEES.



THESE Garments are to be made in every way the same as the Frocks, only shorter, according to the annexed Table.

They are to be cut straight, with cross flaps, and the shoulders to be faced with the same.

SHOOTING COATS.

THESE are required to be cut from four to six inches fuller round the bottom, and two inches longer, than the single-breasted Coatees; they should have four outside Pockets, and one large one inside round the waist, which must be from thirty-three to forty-two inches. There must be a spring on the front of the forepart skirt, as there must be from four to six inches allowed, to give room for the large inside Pocket.

BOYS DUFFLE COATS.

SIZES.	5	6	7	8	9	10	11	12
	Inches.	Inches.	Inches.	Inches.	Inches.	Inches.	Inches.	Inches.
Length of the Back	32	33 $\frac{1}{2}$	35	37	39	41	43	45
Half-width of the Back, between } the Shoulders	6 $\frac{1}{4}$	6 $\frac{1}{2}$	6 $\frac{3}{4}$	7	7 $\frac{1}{4}$	7 $\frac{1}{2}$	7 $\frac{3}{4}$	8
Length of the Sleeve, from the back } seam to the Elbow	16 $\frac{1}{2}$	17	17 $\frac{1}{2}$	18	18 $\frac{1}{2}$	19	19 $\frac{1}{2}$	20
Full length of the Sleeve, including } the Cuff	24 $\frac{1}{2}$	25 $\frac{1}{2}$	26 $\frac{1}{2}$	27 $\frac{1}{2}$	28 $\frac{1}{2}$	29 $\frac{1}{2}$	30 $\frac{1}{2}$	31 $\frac{1}{2}$
Width of the Sleeve, at top from } point to point	8 $\frac{1}{4}$	8 $\frac{3}{4}$	8 $\frac{1}{2}$	8 $\frac{5}{8}$	8 $\frac{3}{4}$	8 $\frac{7}{8}$	9	9 $\frac{1}{4}$
Width of the small of Sleeve	6 $\frac{7}{8}$	7	7 $\frac{1}{8}$	7 $\frac{1}{4}$	7 $\frac{3}{8}$	7 $\frac{1}{2}$	7 $\frac{5}{8}$	7 $\frac{3}{4}$
Width of the Breast	6 $\frac{1}{4}$	6 $\frac{1}{2}$	6 $\frac{3}{4}$	7	7 $\frac{1}{4}$	7 $\frac{1}{2}$	8	8 $\frac{1}{2}$
Half round the Breast	16	17	18	19	20	21	22	23
Half round the Waist	19	20	21	22	23	24	25	26
Quantity each size will take of } Norwich or Yorkshire Duffle, 32 inches wide	Yards. 2 $\frac{3}{8}$	Yards. 2 $\frac{1}{2}$	Yards. 2 $\frac{5}{8}$	Yards. 2 $\frac{3}{4}$	Yards. 2 $\frac{7}{8}$	Yards. 3	Yards. 3 $\frac{1}{4}$	Yards. 3 $\frac{1}{2}$

BOY'S DUFFLE COATS.

THESE Coats are generally cut out of 32 inch Duffle. First, open the Piece, then fold it with the wool to your right hand, then lay down the 12th size and 8th size foreparts, and the 9th and 11th size together, as two will come out of the width, and two of the 10th size foreparts will also come out of the width, back and sleeves, and back and capes. The 9th size Cape being nine inches the other Capes must be varied according to the size; the small sizes will come a different way, but out of the quantity given.

BOY'S SURTOUTS.

SIZES.	7	8	9	10	11	12
	Inches.	Inches.	Inches.	Inches.	Inches.	Inches.
Length of the Waist.....	12 $\frac{1}{2}$	13	13 $\frac{1}{2}$	14	14 $\frac{3}{4}$	15 $\frac{1}{2}$
Full length of the Surtout.....	35	37 $\frac{1}{2}$	39	41	43	45
Half-width of the Back, between } the Shoulders.....	4 $\frac{1}{8}$	4 $\frac{1}{4}$	4 $\frac{3}{8}$	4 $\frac{1}{2}$	4 $\frac{3}{4}$	5
Length of the Sleeve, from the mid- } dle of the Back to the Elbow... }	17	17 $\frac{1}{2}$	18	18 $\frac{1}{2}$	19	19 $\frac{1}{2}$
Full Length of the Sleeve, including } the Cuff.....	26 $\frac{1}{2}$	27 $\frac{1}{2}$	28 $\frac{1}{2}$	29 $\frac{1}{2}$	30 $\frac{1}{2}$	31 $\frac{1}{2}$
Width of the Sleeve, at top from } point to point.....	7 $\frac{3}{4}$	8	8 $\frac{1}{4}$	8 $\frac{1}{2}$	8 $\frac{3}{4}$	11
Width of the small of Sleeve.....	5 $\frac{1}{4}$	5 $\frac{1}{2}$	5 $\frac{3}{4}$	6	6 $\frac{1}{4}$	6 $\frac{1}{2}$
Half round the Breast..	15	15 $\frac{1}{2}$	16	16 $\frac{1}{2}$	17	17 $\frac{1}{2}$
Half round the Waist.....	14	14 $\frac{1}{2}$	15	15 $\frac{1}{2}$	16 $\frac{1}{4}$	17
	Yards.	Yards.	Yards.	Yards.	Yards.	Yards.
Quantity each size will take of 27 } Inch width.....	3 $\frac{1}{4}$	3 $\frac{3}{8}$	3 $\frac{1}{2}$	3 $\frac{5}{8}$	3 $\frac{3}{4}$	4

BOY'S SURTOUTS.

THIS is a **Great Coat** or **Upper Garment**. The quantity given in the annexed **Table** will make them handsome.

First fold the **Piece**, then lay on the **Pattern** with the wool to your right hand, with the front edge of the forepart to the back edge of the cloth, then bring the back down the nearest side of the cloth, in the same manner as the **Men's** in **Plate IX**.

BOYS WRAPPER COATS.

(PLATE XI.)

SIZES.	Inches.												Yards.	
	1	2	3	4	5	6	7	8	9	10	11	12	Yards.	Yards.
Length of the Back.....	27	28½	30	31½	33	34½	36	37½	39	40½	42½	45		
Half-width of the Back between the Shoulders.....	5½	5¼	5¾	5½	5⅝	5¾	5⅞	6	6¼	6½	6¾	7		
Length of the Sleeve, from the middle of the Back to the Elbow ..	12	12½	13	13¾	14½	15¼	16	16¾	17½	18¼	19	19¾		
Full length of the Sleeve, including the Cuff.....	18½	19½	20½	21¾	23½	24½	26½	27½	28½	29½	30½	31½		
Width of the Sleeve at top, from point to point.....	5¾	6	6¼	6½	6¾	7½	7¾	8	8¼	8½	8¾	9		
Width of the Small of Sleeve..	4⅞	4¼	4¾	4½	4¾	5	5¼	5½	5¾	6	6¼	6½		
Half round the Breast.....	15	16	17	18	19	20	21	22	23	24	25	26		
Half round the Bottom.....	20	21	22	23	24	25	26	27	28	29	30	31		
Quantity each size will take of 54 Inch Coating.....	¾	⅞	⅞	⅞	1	1⅞	1¼	1¼	1⅞	1⅞	1⅞	2		

BOY'S WRAPPER COATS.



THE Boys' Wrapper Coats will come out as laid down in Plate XI.

The other sizes will come with the back and the forepart to the bottom.

E

BOY'S LAPPEL COATS.

SIZES.	7	8	9	10	11	12
	Inches.	Inches.	Inches.	Inches.	Inches.	Inches.
Length of the Waist.....	13	13 $\frac{1}{2}$	14	14 $\frac{1}{2}$	15	15 $\frac{1}{2}$
Full length of the Coat	27 $\frac{1}{2}$	29	30 $\frac{1}{2}$	32	33 $\frac{1}{2}$	35
Half-width of the Back, between the } Shoulders.....	4 $\frac{1}{2}$	4 $\frac{5}{8}$	4 $\frac{3}{4}$	4 $\frac{7}{8}$	5	5 $\frac{1}{4}$
Length of Sleeve, from the middle } of the Back to the Elbow... ..	16 $\frac{1}{2}$	17	17 $\frac{1}{2}$	18	18 $\frac{1}{2}$	19
Full length of the Sleeve, including } the cuff.....	26	27	28	29	30	31
Width of Sleeve at top from point } to point,	7 $\frac{1}{2}$	7 $\frac{3}{4}$	8	8 $\frac{1}{4}$	8 $\frac{1}{2}$	8 $\frac{3}{4}$
Width of the small of Sleeve.....	5	5 $\frac{1}{4}$	5 $\frac{1}{2}$	5 $\frac{3}{4}$	6	6 $\frac{1}{4}$
Half round the Breast	13	13 $\frac{3}{4}$	14 $\frac{1}{2}$	15 $\frac{1}{4}$	16	17
Half round the Waist	12 $\frac{1}{2}$	13 $\frac{1}{4}$	14	14 $\frac{3}{4}$	15 $\frac{1}{4}$	16
	Yards.	Yards.	Yards	Yards.	Yards.	Yards
Quantity each size will take of 58 $\frac{1}{2}$ } Inch width.....	1	1 $\frac{1}{8}$	1 $\frac{1}{8}$	1 $\frac{1}{8}$	1 $\frac{1}{4}$	1 $\frac{3}{8}$

BOY'S LAPPEL COATS.



THESE Garments are to be cut in the following manner. First fold your **Piece**, and lay the wool to the left hand, then lay the bottom of the back to the left, on the near side of your cloth, and the side seam of the forepart to the other edge, and lay the **Sleeves** and facings in between the backs and foreparts; and the **Coat** will come out of the quantity given in the **Table**.

BOY'S LAPPEL COATEES.

SIZES.	7	8	9	10	11	12
	Inches.	Inches.	Inches.	Inches.	Inches.	Inches.
Length of the Waist.....	$12\frac{1}{2}$	13	$13\frac{1}{2}$	14	$14\frac{1}{2}$	15
Full length of the Coatee.....	$20\frac{1}{2}$	22	$23\frac{1}{2}$	25	$26\frac{1}{2}$	28
Half-width of the Back, between } the Shoulders.....	$4\frac{1}{2}$	$4\frac{3}{8}$	$4\frac{1}{2}$	$4\frac{3}{4}$	5	$5\frac{1}{4}$
Length of the Sleeve, from the mid- } dle of the Back to the Elbow... }	$16\frac{1}{2}$	17	$17\frac{1}{2}$	18	$18\frac{1}{2}$	19
Full Length of the Sleeve, including } the Cuff.....	26	27	28	29	30	31
Width of the Sleeve, at top from } point to point.....	$7\frac{1}{2}$	$7\frac{3}{4}$	8	$8\frac{1}{4}$	$8\frac{1}{2}$	$8\frac{3}{4}$
Width of the small of Sleeve.....	5	$5\frac{1}{4}$	$5\frac{1}{2}$	$5\frac{3}{4}$	6	$6\frac{1}{4}$
Half round the Breast..	13	$13\frac{3}{4}$	$14\frac{1}{2}$	$15\frac{1}{4}$	16	17
Half round the Waist.....	$12\frac{3}{4}$	$13\frac{1}{4}$	14	$14\frac{3}{4}$	$15\frac{1}{4}$	16
Quantity each size will take of 27 } Inch width.....	Yards. $1\frac{5}{8}$	Yards. $1\frac{3}{4}$	Yards. $1\frac{7}{8}$	Yards. 2	Yards. $2\frac{1}{8}$	Yards. $2\frac{3}{8}$

BOY'S LAPPEL COATEES.

FOR these Coatees, lay the 12th size back and forepart, and the 7th size sleeve—the 7th size back and forepart, and the 12th size sleeve ; and for the other sizes in the same manner.

The quantity given in the annexed Table will make them full and handsome.

BOY'S SINGLE-BREASTED FROCK COATS.

SIZES.	7	8	9	10	11	12
	Inches.	Inches.	Inches.	Inches.	Inches.	Inches.
Length of the Waist	13	13 $\frac{1}{2}$	14	14 $\frac{1}{2}$	15	15 $\frac{1}{2}$
Length of the Coat	29	31	33	35	37	39
Half-width of the Back, between } the Shoulders }	4 $\frac{1}{4}$	4 $\frac{1}{2}$	4 $\frac{3}{4}$	5	5 $\frac{1}{4}$	5 $\frac{1}{2}$
Length of the Sleeve, from the back } seam to the Elbow }	16 $\frac{1}{2}$	17	17 $\frac{1}{2}$	18	18 $\frac{1}{2}$	19
Full length of the Sleeve, including } the Cuff }	26	27	28	29	30	31
Width of the Sleeve, at top from } point to point }	7 $\frac{1}{2}$	7 $\frac{3}{4}$	8	8 $\frac{1}{4}$	8 $\frac{1}{2}$	8 $\frac{3}{4}$
Width of the small of Sleeve	5	5 $\frac{1}{4}$	5 $\frac{1}{2}$	5 $\frac{3}{4}$	6	6 $\frac{1}{2}$
Width of the Breast	13	13 $\frac{3}{4}$	14 $\frac{1}{2}$	15 $\frac{1}{4}$	16	17
Half round the Waist	12 $\frac{1}{2}$	13 $\frac{1}{4}$	14	14 $\frac{3}{4}$	15 $\frac{1}{4}$	16
	Yards.	Yards.	Yards.	Yards.	Yards.	Yards.
Quantity each size will take of } 27 inch width }	3 $\frac{1}{8}$	3 $\frac{1}{4}$	3 $\frac{3}{8}$	3 $\frac{1}{2}$	3 $\frac{5}{8}$	3 $\frac{7}{8}$

**BOY'S SINGLE-BREASTED
FROCK COATS.**



THESE Frocks are to be cut straight, with cross flaps, the pockets and shoulders to be faced with the same.

The quantities given in the annexed Table will make them full and handsome.

BOY'S SINGLE BREASTED COATEES.

SIZES.	7	8	9	10	11	12
	Inches.	Inches	Inches.	Inches.	Inches.	Inches.
Length of the Waist.....	12 $\frac{1}{2}$	13	13 $\frac{1}{2}$	14	14 $\frac{1}{2}$	15
Length of the Coatee.....	23 $\frac{1}{2}$	25	26 $\frac{1}{2}$	28	29 $\frac{1}{2}$	31
Half-width of the Back between the Shoulders.....	4 $\frac{1}{4}$	4 $\frac{1}{2}$	4 $\frac{3}{4}$	5	5 $\frac{1}{4}$	5 $\frac{1}{2}$
Length of the Sleeve, from the mid- dle of the Back to the Elbow ..	16 $\frac{1}{2}$	17	17 $\frac{1}{2}$	18	18 $\frac{1}{2}$	19
Full length of the Sleeve, including the Cuff.....	25 $\frac{1}{2}$	26 $\frac{1}{2}$	27 $\frac{1}{2}$	28 $\frac{1}{2}$	29 $\frac{1}{2}$	30 $\frac{1}{2}$
Width of the Sleeve at top, from point to point.....	7 $\frac{3}{4}$	8	8 $\frac{1}{4}$	8 $\frac{1}{2}$	8 $\frac{3}{4}$	9
Width of the Small of Sleeve.....	5	5 $\frac{1}{4}$	5 $\frac{1}{2}$	5 $\frac{3}{4}$	6 $\frac{1}{4}$	6 $\frac{1}{2}$
Half round the Breast.....	13	13 $\frac{3}{4}$	14 $\frac{1}{2}$	15 $\frac{1}{4}$	16	17
Half round the Bottom.....	12 $\frac{1}{2}$	13 $\frac{1}{2}$	14	14 $\frac{1}{2}$	15 $\frac{1}{4}$	16
Quantity each size will take of 27 Inch Fustian.....	Yards. 2 $\frac{1}{4}$	Yards. 2 $\frac{3}{8}$	Yards. 2 $\frac{1}{2}$	Yards. 2 $\frac{5}{8}$	Yards. 2 $\frac{3}{4}$	Yards 2 $\frac{7}{8}$

BOYS' SINGLE-BREASTED COATEES.

THESE Coatees are to be made the same as the **Frocks**, with pockets and shoulders faced with the same: the only difference will be in the length.

The quantities given in the annexed **Table** will make them full and handsome.

SEAMEN'S PEA JACKETS.

SIZES.	16	17	18	19	20	21
	Inches.	Inches.	Inches.	Inches.	Inches.	Inches.
Length of the Jacket.....	36	38 $\frac{1}{4}$	40 $\frac{1}{2}$	42 $\frac{3}{4}$	45	47 $\frac{1}{2}$
Half-width of the Back, between the } Shoulders.....	8	8 $\frac{1}{4}$	8 $\frac{1}{2}$	8 $\frac{3}{4}$	9	9 $\frac{1}{4}$
Length of Sleeve, from the middle } of the Back to the Elbow... ..	20	20 $\frac{3}{4}$	21 $\frac{1}{2}$	22 $\frac{1}{4}$	23	23 $\frac{3}{4}$
Full length of the Sleeve,.....	31	32	33	34	35	36
Width of Sleeve at top from point } to point,	10	10 $\frac{1}{2}$	11	11 $\frac{1}{2}$	12	12 $\frac{1}{2}$
Width of the small of Sleeve.....	8	8 $\frac{1}{4}$	8 $\frac{1}{2}$	8 $\frac{3}{4}$	9	9 $\frac{1}{4}$
Half round the Breast	23	24	25	26	27	28
Half round the bottom of the Jacket	28	29 $\frac{1}{2}$	31	32 $\frac{1}{2}$	34	35 $\frac{1}{2}$
Quantity each size will take of 54 } Inch Flushing.....	Yards. 2	Yards. 2 $\frac{1}{8}$	Yards. 2 $\frac{1}{4}$	Yards. 2 $\frac{3}{8}$	Yards. 2 $\frac{1}{2}$	Yards. 2 $\frac{5}{8}$

SEAMEN'S PEA JACKETS.

THESE Jackets are made double-breasted. The twenty-one nails should be twelve inches in the breast, and the sixteen nails ten inches : the buttons should be placed five inches from the edge, which will give them a good lap over, as they are generally worn in cold countries. They are usually cut from $\frac{2}{3}$ blue or olive Flushing, and are lined, with other blue or green baize, to the bottom of the body and sleeves. The collar to be $4\frac{1}{2}$ inches deep, and stand up close round the neck, and the lappel to button over close. The elbow pieces to be twelve inches long, three inches wide at the top, (above the elbow,) and taper off to about $2\frac{1}{2}$ inches at the bottom. They require six buttons on each side, and to button from twenty to twenty-five inches from the shoulder. They will take twice the length. The sleeves must be cut very wide at the bottom, to give room for tucking one hand in the other sleeve. They have no cuffs.

SEAMEN'S JACKETS,

KNOWN BY THE NAME OF MONKEY JACKETS.

SIZES.	3	4	5	6
	Inches.	Inches.	Inches.	Inches.
Length of the Back.....	25	26	27	28
Half-width of the Back between the Shoulders.....	8	8½	9	9½
Length of the Sleeve, from the mid- dle of the Back to the Elbow ..	21½	22¼	23	23¾
Full length of the Sleeve.....	33	34	35	36
Width of the Sleeve at top, from point to point.....	11	11½	12	12¼
Width of the Small of Sleeve.. . . .	8½	8¾	9	9¼
Half round the Breast.....	24	25	26	27
Half round the Bottom.....	24	25	26	27
Quantity each size will take of 54 Inch Flushing.....	Yards. 1¾	Yards. 1¾	Yards. 1½	Yards. 1½

SEAMEN'S JACKETS,

KNOWN BY THE NAME OF MONKEY JACKETS.



THIS is a round Jacket made of $\frac{6}{7}$ blue or olive Flushing. The lengths given in the Table are good lengths for this Article. First lay on the body pattern which the 5th size will take, being the width of the stuff—as these Jackets do not require either back seam or side seam. They have two rows of buttons, and two rows of button holes. Set the buttons five inches from the edge, and keep the lappel well up, that they may button over close. The collar to be twenty-four inches long and four inches deep, that it may stand up close round the neck. The sleeves to be cut in the same manner as the Pea Jackets, and the body and sleeves to be lined with green or blue $\frac{6}{7}$ baize.

SEAMEN'S FLUSHING TROWERS.

SIZES.	3	4	5	6
	Inches.	Inches.	Inches.	Inches.
Length from the Hip to the Bottom,	38	40	42	44
Width of the top of the Forepart,...	10	10 $\frac{1}{2}$	11	11 $\frac{1}{2}$
Height of the Falldown from the } Crutch	12 $\frac{3}{4}$	13 $\frac{1}{4}$	13 $\frac{3}{4}$	14 $\frac{1}{2}$
Width of the Crutch.....	13	13 $\frac{1}{2}$	14	15
Width of the middle of the Thigh,..	11 $\frac{1}{2}$	11 $\frac{3}{4}$	12 $\frac{1}{2}$	13
Width of the Bottom.....	10	10 $\frac{1}{2}$	11	11 $\frac{1}{2}$
Length of the Leg Seam.....	28	29 $\frac{1}{2}$	31	32 $\frac{1}{2}$
Length of the Waistband.....	17 $\frac{1}{2}$	18	19	20
	Yards.	Yards.	Yards.	Yards.
Quantity each Size will take of 54 } Inch Flushing.....	1 $\frac{1}{8}$	1 $\frac{3}{16}$	1 $\frac{1}{4}$	1 $\frac{5}{16}$

SEAMEN'S FLUSHING TROWERS.

THESE Trowsers are to be cut as follows : **F**irst, open your piece—then, as these Trowsers are cut without any side seam and with a broad falldown, lay on your first pattern with the top of the falldown and seat to the top of the Piece, and that will go two inches over the middle of the Piece, and the second pattern will drop into the hollow of the first six inches below the crutch point of the first ; and thus they will follow each other in a regular manner, and make the Trowsers complete.

SHEPHERDS' JACKETS.

SIZES.	3	4	5	6
	Inches.	Inches.	Inches.	Inches.
Length of the Waist.....	16	17	18	19
Full length of the Jacket.....	32	34	36	38
Half-width of the Back, between } the Shoulders..... }	7½	8	8½	9
Length of the Sleeve, from the mid- } dle of the Back to the Elbow... }	21	21¾	22½	23¼
Full Length of the Sleeve.....	32	33	34	35
Width of the Sleeve, at top from } point to point..... }	10	10½	11	11½
Width of the small of Sleeve....	7½	8	8½	9
Half round the Breast..	20	21	22	23
Half round the Waist....	19	20	21	22
Quantity each size will take of 36 } Inch width..... }	2½	2½	3½	3¼

SHEPHERDS' JACKETS. ;

THESE Jackets are cut from $\frac{4}{7}$ Foulweather. Two foreparts out of the width, with small Fly sides about seven or eight inches long. The back is to be tacked over at the waist, the same as a coat. The shoulder patch is to come to the bottom of the back sye, and well over the shoulder of the forepart. They have a stand-up collar, and a fly in the breast; elbow pieces to cover the elbow, four inches wide and eight long, slashed sleeves and hands, bound with leather, cross flaps, and leather pockets. Allum leather is suitable for that purpose.

BREWERS' JACKETS.

SIZES.	3	4	5	6
	Inches.	Inches	Inches.	Inches.
Length of the Jacket.....	33	34½	36	37½
Half-width of the Back between the Shoulders.....	7½	8	8½	9
Length of the Sleeve, from the mid- dle of the Back to the Elbow ..	20½	21¼	22	22½
Full length of the Sleeve,.....	32	33	34	35
Width of the Sleeve at top, from point to point.....	10	10¼	10½	11
Width of the Small of Sleeve.. . . .	7½	7¾	8	8¼
Half round the Breast.....	19	20	21	22
Half round the Waist.....	18½	19½	20½	21½
Quantity each size will take of White Kersey 82 inches wide, }	Yards. 2¾	Yards. 2½	Yards. 2⅞	Yards. 2⅞

BREWERS' JACKETS.

THESE Jackets are sometimes cut from Foulweather, sometimes from white Kersey, thirty-two inches wide, which is generally good in quality. They are made with a skirt about seven inches long, and with shoulder patches the same as Shepherds' Jackets. The inside sleeves are made double, from the hand to about three or four inches above the elbow; and they have a fly in the breast. The buttons are made of Foulweather, (two thicknesses) and worked over the edge with a button-hole stitch. They have cross flaps, and a heart on the hip.

COUNTRYMEN'S LONG JACKETS.

(PLATE XII)

SIZES.	1	2	3	4	5	6
	Inches.	Inches.	Inches.	Inches.	Inches.	Inches.
Length of the Jacket.....	27	28	29	30	31	32
Half-width of the Back, between the } Shoulders.....	$6\frac{1}{4}$	$6\frac{3}{4}$	$7\frac{1}{4}$	$7\frac{3}{4}$	$8\frac{1}{4}$	$8\frac{3}{4}$
Length of Sleeve, from the middle } of the Back to the Elbow....	19	$19\frac{3}{4}$	$20\frac{1}{2}$	$21\frac{1}{4}$	22	$22\frac{3}{4}$
Full length of the Sleeve.....	30	31	32	33	34	35
Width of Sleeve at top from point } to point,	$9\frac{1}{4}$	$9\frac{1}{2}$	$9\frac{3}{4}$	10	$10\frac{1}{4}$	$10\frac{1}{2}$
Width of the small of Sleeve.....	$6\frac{3}{4}$	7	$7\frac{1}{4}$	$7\frac{1}{2}$	$7\frac{3}{4}$	8
Half round the Breast	$17\frac{1}{2}$	18	19	20	21	22
Half round the Waist.....	17	$17\frac{1}{2}$	$18\frac{1}{2}$	19	20	21
	Yards.	Yards.	Yards.	Yards.	Yards.	Yards.
Quantity each size will take of 28 } Inch Kersey.....	$2\frac{1}{8}$	$2\frac{1}{4}$	$2\frac{3}{8}$	$2\frac{1}{2}$	$2\frac{1}{8}$	$2\frac{7}{8}$

COUNTRYMEN'S LONG JACKETS.

THESE Jackets are cut from 28 inch Kersey. Two foreparts, (as laid down in the 12th Plate,) three backs, and three sleeves will come out of the width.

They are made with cross flaps and Allum leather pockets, and with a skirt about six or seven inches long.

These are called Skirted Jackets. There are others called Round Jackets, which are cut three inches shorter, made round, and sewed to the bottom.

MEN'S STABLE JACKETS.

(PLATE XIII.)

SIZES.	1	2	3	4	5	6
	Inches.	Inches.	Inches.	Inches.	Inches.	Inches.
Length of the Jacket.....	20	21	22	23	24	25
Half-width of the Back, between } the Shoulders.....	5½	6	6½	7	7½	8
Length of the Sleeve, from the back } seam to the Elbow.....	19	19¾	20½	21	22	23
Full length of the Sleeve, including } the Cuff.....	31	32	33	34	35	36
Width of the Sleeve at top, from } point to point.....	9¼	9½	9¾	10	10¼	10½
Width of the small of Sleeve.....	6½	6¾	7	7¼	7½	7¾
Width of the Breast.....	17	18	19	20	21	22
Half round the Waist.....	16	17	18	19	20	21
Quantity each size will take of } 27 inch width.....	3	3⅛	3¼	3⅓	3⅞	3¾
	Yards.	Yards.	Yards.	Yards.	Yards.	Yards.

MEN'S STABLE JACKETS.

THE following directions are proper for the 27 inch Fustian ; namely, those which are laid down in the Plate XIII. the foreparts of the 2nd and 6th sizes, the foreparts of the 3rd and 5th sizes, or two of the 4th size, with backs and facings for each, will come out of the width ; and three sleeves will come also from the width. These Jackets will require $1\frac{1}{2}$ yard of $\frac{2}{7}$ cotton to line them.

MEN'S LINSEY JACKETS.

SIZES.	1	2	3	4	5	6	7
	Inches.	Inches.	Inches.	Inches.	Inches.	Inches.	Inches.
Length of the Jacket	21	22	23	24	25	26	27
Half-width of the Back, between } the Shoulders.....	6	6 $\frac{1}{2}$	7	7 $\frac{1}{2}$	8	8 $\frac{1}{2}$	9
Length of the Sleeve, from the mid- } dle of the Back to the Elbow... }	19	19 $\frac{3}{4}$	20 $\frac{1}{2}$	21 $\frac{1}{4}$	22	22 $\frac{3}{4}$	23
Full Length of the Sleeve.....	31	32	33	34	35	36	37
Width of the Sleeve, at top from } point to point.....	9 $\frac{1}{4}$	9 $\frac{1}{2}$	9 $\frac{3}{4}$	10	10 $\frac{1}{4}$	10 $\frac{1}{2}$	11
Width of the small of Sleeve.....	6 $\frac{1}{2}$	6 $\frac{3}{4}$	7	7 $\frac{1}{4}$	7 $\frac{1}{2}$	7 $\frac{3}{4}$	8
Half round the Breast..	18	19	20	21	22	23	24
Half round the Waist.....	17	18	19	20	21	22	23
	Yards.	Yards.	Yards.	Yards.	Yards.	Yards.	Yards.
Quantity each size will take of 34 } Inch width.....	1 $\frac{7}{8}$	1 $\frac{1}{2}$	1 $\frac{2}{8}$	1 $\frac{1}{8}$	1 $\frac{1}{8}$	1 $\frac{5}{8}$	1 $\frac{1}{8}$

MEN'S LINSEY JACKETS.

THESE Jackets are to be cut according to the rule laid down in the **Table**—the backs without back seams. They will come the same as the foreparts 3 and 6, 4 and 5, and four sleeves out of the width.

The **Linseys** are thirty four inches wide, and sixty three or sixty four yards long. A **Piece** will produce thirty six stand-up collars, and thirty two rolling collars.

MEN'S SETTEES,
OR
DOUBLE-BREADED JACKETS.

SIZES.	1	2	3	4	5	6
	Inches.	Inches.	Inches.	Inches.	Inches.	Inches.
Length of the Back.....	20	21	22	23	24	25
Half-width of the Back, between the Shoulders.....	5½	6	6½	7	7½	8
Length of Sleeve, from the middle } of the Back to the Elbow... .. }	19	19¾	20½	21¼	22	22¾
Full length of the Sleeve,.....	31	32	33	34	35	36
Width of Sleeve at top, from point } to point,	9¼	9½	9¾	10	10¼	10½
Width of the small of Sleeve.....	6½	6¾	7	7¼	7½	7¾
Half round the Breast.....	17	18	19	20	21	22
Half round the Waist.....	16	17	18	19	20	21
	Yards.	Yards.	Yards.	Yards.	Yards.	Yards.
Quantity each size will take of 27 Inch plain, with coat Collar and Cuffs.....	2¼	2¾	2½	2⅝	2¾	2⅞
Quantity each size will take with Stand-up Collar and Slashed Sleeves of 27 inch plain.....	2	2⅞	2¼	2¾	2½	2⅞
Quantity each size will take of 18 inch cord or velveteen, with slashed sleeves & stand-up Collar	3¼	3¾	3½	3¾	4	4⅞

MEN'S SETTEES,**OR****DOUBLE-BREASTED JACKETS.**

THE twenty seven inch are generally Seamen's Jackets, with Coat Collar and Cuffs. Those with a stand-up Collar and slashed sleeves are a more common article. Such as are made of velveteen or cord are generally worn by Landsmen.

H 2

BOYS' LONG JACKETS.

SIZES.	7	8	9	10	11	12
Length of the Back of the round Jacket..... } Inches.	Inches. 19	Inches. 20	Inches. 21	Inches. 22	Inches. 23	Inches. 24
Length of the Skirted Jacket.....	22	23	24	25	26	27
Half-width of the Back, between } the Shoulders..... } Inches.	4 $\frac{3}{4}$	5	5 $\frac{1}{4}$	5 $\frac{1}{2}$	5 $\frac{3}{4}$	6
Length of the Sleeve, from the mid- } dle of the Back to the Elbow... } Inches.	16 $\frac{1}{2}$	17	17 $\frac{1}{2}$	18	18 $\frac{1}{2}$	19
Full Length of the Sleeve.....	25	26	27	28	29	30
Width of the Sleeve at top, from } point to point..... } Inches.	7 $\frac{3}{4}$	8	8 $\frac{1}{4}$	8 $\frac{1}{2}$	8 $\frac{3}{4}$	9
Width of the small of Sleeve.....	5 $\frac{1}{4}$	5 $\frac{1}{2}$	5 $\frac{3}{4}$	6	6 $\frac{1}{4}$	6 $\frac{1}{2}$
Half round the Breast..	15	15 $\frac{1}{2}$	16	16 $\frac{1}{2}$	17	17 $\frac{1}{2}$
Half round the Waist.....	14 $\frac{1}{2}$	15	15 $\frac{1}{2}$	16	16 $\frac{1}{2}$	17
Quantity each size will take of 28 } Inch White Kersey..... } Yards.	1 $\frac{3}{8}$	1 $\frac{1}{2}$	1 $\frac{5}{8}$	1 $\frac{3}{4}$	1 $\frac{7}{8}$	2

BOYS' LONG JACKETS.

THESE Jackets are to be cut out as follows :
foreparts and collars, four backs, and four sleeves
out of the width.

The quantity given is for the skirted or long
Jackets. There is another kind called the round
Jacket, which requires a different quantity.

The whole length of the Kersey is generally
twenty nine yards.

BOYS' STABLE JACKETS.

SIZES.	7	8	9	10	11	12
	Inches.	Inches.	Inches.	Inches.	Inches.	Inches.
Length of the Back.....	15 $\frac{1}{4}$	16	16 $\frac{3}{4}$	17 $\frac{1}{2}$	18 $\frac{1}{4}$	19
Half-width of the Back, between } the Shoulders.....	4 $\frac{1}{4}$	4 $\frac{1}{2}$	4 $\frac{3}{4}$	5	5 $\frac{1}{4}$	5 $\frac{1}{2}$
Length of the Sleeve, from the mid- } dle of the Back to the Elbow ..	16 $\frac{1}{2}$	17	17 $\frac{1}{2}$	18	18 $\frac{1}{2}$	19
Full length of the Sleeve,.....	26	27	28	29	30	31
Width of the Sleeve at top, from } point to point.....	7 $\frac{1}{2}$	7 $\frac{3}{4}$	8	8 $\frac{1}{4}$	8 $\frac{1}{2}$	8 $\frac{3}{4}$
Width of the Small of Sleeve... ..	5	5 $\frac{1}{4}$	5 $\frac{1}{2}$	5 $\frac{3}{4}$	6	6 $\frac{1}{4}$
Half round the Breast.....	14	14 $\frac{1}{2}$	15	15 $\frac{1}{2}$	16	16 $\frac{1}{2}$
Half round the Waist.....	13 $\frac{1}{2}$	14	14 $\frac{1}{2}$	15	15 $\frac{1}{2}$	16
	Yards.	Yards.	Yards.	Yards.	Yards.	Yards.
Quantity each size will take of 27 } inch Fustian.....	1 $\frac{1}{8}$	1 $\frac{1}{4}$	1 $\frac{3}{8}$	1 $\frac{1}{2}$	1 $\frac{5}{8}$	1 $\frac{3}{4}$
Quantity each size will take of 18 } inch cord velveteen.....	1 $\frac{11}{16}$	1 $\frac{7}{8}$	1 $\frac{1}{8}$	2 $\frac{1}{4}$	2 $\frac{7}{16}$	2 $\frac{5}{8}$

BOYS' STABLE JACKETS.

THESE Jackets will come out of both widths as shewn in the Table.

BOYS' SETTEES,
OR
DOUBLE-BREADED JACKETS.

SIZES.	7	8	9	10	11	12
	Inches.	Inches.	Inches.	Inches.	Inches.	Inches.
Length of the Back.....	15 $\frac{1}{4}$	16	16 $\frac{3}{4}$	17 $\frac{1}{2}$	18 $\frac{1}{4}$	19
Half-width of the Back, between } the Shoulders.....	4 $\frac{1}{4}$	4 $\frac{1}{2}$	4 $\frac{3}{4}$	5	5 $\frac{1}{4}$	5 $\frac{1}{2}$
Length of the Sleeve, from the back } seam to the Elbow.....	16 $\frac{1}{2}$	17	17 $\frac{1}{2}$	18	18 $\frac{1}{2}$	19
Full length of the Sleeve, including } the Cuff.....	20	21	22	23	24	25
Width of the Sleeve at top, from } point to point.....	7 $\frac{1}{2}$	7 $\frac{3}{4}$	8	8 $\frac{1}{4}$	8 $\frac{1}{2}$	8 $\frac{3}{4}$
Width of the small of Sleeve.....	5	5 $\frac{1}{4}$	5 $\frac{1}{2}$	5 $\frac{3}{4}$	6	6 $\frac{1}{4}$
Width of the Breast.....	14	14 $\frac{1}{2}$	15	15 $\frac{1}{2}$	16	16 $\frac{1}{2}$
Half round the Waist.....	13	13 $\frac{1}{2}$	14	14 $\frac{1}{2}$	15	15 $\frac{1}{2}$
	Yards.	Yards.	Yards.	Yards.	Yards.	Yards.
Quantity each size will take of 27 } inch plain or Honley.....	1 $\frac{1}{4}$	1 $\frac{3}{8}$	1 $\frac{1}{2}$	1 $\frac{5}{8}$	1 $\frac{3}{4}$	1 $\frac{7}{8}$
Quantity each size will take of 18 } inch Cord or Velvet.....	1 $\frac{7}{8}$	2 $\frac{1}{8}$	2 $\frac{1}{4}$	2 $\frac{5}{8}$	2 $\frac{5}{8}$	2 $\frac{3}{4}$

BOYS' SETTEES,**OR****DOUBLE-BREASTED JACKETS.**

THESE Jackets are cut as follows : out of the 27 inch **Stuff** will come two foreparts, four backs, or four sleeves from the width ; and out of the 18 inch, the forepart, and bottom of the back into the sye, and the top of the second back into the neck of the forepart. **Reverse** the second lay of the forepart, and so go on regularly.

MEN'S BREECHES.

(PLATE XIV.)

SIZES.	1	2	3	4	5	6
	Inches.	Inches.	Inches.	Inches.	Inches.	Inches.
Length of the Side Seam from the hip to the Knee..... } }	27	28	29	30	31	32
Width of the top of the Forepart,...	8 $\frac{3}{4}$	9	9 $\frac{1}{4}$	9 $\frac{1}{2}$	10	10 $\frac{1}{2}$
Height of the Falldown from the Crutch } }	12 $\frac{1}{2}$	13	13 $\frac{1}{2}$	14	14 $\frac{1}{2}$	15
Width of the Crutch.....	11	11 $\frac{1}{2}$	12	12 $\frac{1}{2}$	13	14
Width of the middle of the Thigh,..	8 $\frac{1}{2}$	9	9 $\frac{1}{2}$	10	10 $\frac{1}{2}$	11 $\frac{1}{4}$
Width above the Knee.....	7	7 $\frac{1}{4}$	7 $\frac{3}{4}$	8 $\frac{1}{4}$	8 $\frac{3}{4}$	9 $\frac{1}{4}$
Width below the Knee.....	6	6 $\frac{1}{4}$	6 $\frac{1}{2}$	6 $\frac{3}{4}$	7 $\frac{1}{4}$	7 $\frac{3}{4}$
Length of the Leg Seam.....	17	17 $\frac{1}{2}$	18	18 $\frac{1}{2}$	19	19 $\frac{3}{4}$
Length of the Waistband.....	16	16 $\frac{1}{2}$	17	17 $\frac{1}{2}$	18	19
	Yards.	Yards.	Yards.	Yards.	Yards.	Yards.
Quantity each Size will take of 27 } Inch Cord or Cassimere..... } }	1 $\frac{3}{8}$	1 $\frac{7}{8}$	1 $\frac{9}{8}$	1 $\frac{11}{8}$	1 $\frac{13}{8}$	2
Quantity each Size will take of 18 } Inch Cord or Velvetcen.. } }	2	2 $\frac{1}{8}$	2 $\frac{5}{8}$	2 $\frac{1}{2}$	2 $\frac{11}{8}$	3

MEN'S BREECHES.

THERE is a Plate (No. XIV.) shewing the manner of laying down on 27 inch Stuff. On following these rules of cutting, the Breeches will come out complete, and make up handsomely.

BOYS' BREECHES.

SIZES.	7	8	9	10	11	12
	Inches.	Inches.	Inches.	Inches.	Inches.	Inches.
Length of the Side Seam from the Hip to the Knee..... } }	23	23 $\frac{3}{4}$	24 $\frac{1}{2}$	25 $\frac{1}{4}$	26	26 $\frac{3}{4}$
Width of the top of the Forepart....	7 $\frac{1}{4}$	7 $\frac{1}{2}$	7 $\frac{3}{4}$	8	8 $\frac{1}{4}$	8 $\frac{1}{2}$
Height of the Falldown from the Crutch..... } }	10	10 $\frac{1}{2}$	11	11 $\frac{1}{2}$	12	12 $\frac{1}{2}$
Width of the Crutch.....	9 $\frac{1}{2}$	9 $\frac{3}{4}$	10	10 $\frac{1}{4}$	10 $\frac{1}{2}$	11
Width of the middle of the Thigh....	7 $\frac{1}{2}$	7 $\frac{3}{4}$	8	8 $\frac{1}{4}$	8 $\frac{1}{2}$	8 $\frac{3}{4}$
Width above the Knee.....	5 $\frac{3}{4}$	6	6 $\frac{1}{4}$	6 $\frac{1}{2}$	6 $\frac{3}{4}$	7
Width below the Knee.....	4 $\frac{3}{4}$	5	5 $\frac{1}{4}$	5 $\frac{1}{2}$	5 $\frac{3}{4}$	6
Length of the Leg Seam.....	14	14 $\frac{1}{2}$	15	15 $\frac{1}{2}$	16 $\frac{1}{4}$	17
Length of the Waistband.....	13	13 $\frac{1}{2}$	14	14 $\frac{1}{2}$	15	15 $\frac{1}{2}$
	Yards.	Yards.	Yards.	Yards.	Yards.	Yards.
Quantity each size will take of 18 inch Velveteen or Cord..... }	1 $\frac{3}{8}$	1 $\frac{7}{8}$	1 $\frac{1}{2}$	1 $\frac{5}{8}$	1 $\frac{3}{4}$	1 $\frac{7}{8}$

BOYS' BREECHES.

FOR Boys' Breeches, first lay down the 12th size, and out of them will come sufficient to make the garters, and then the other size will follow in close, so that you will want the waistbands at the end. They will take the quantity given in the Table.

MEN'S FINE TROUSERS.

SIZES.	1	2	3	4	5	6
Length of the Side Seam from the hip to the bottom..... } Inches.	36	37½	39	40½	42	44
Width of the top of the Forepart.... } Inches.	8¾	9	9¼	9½	10	10½
Height of the Falldown from the Crutch..... } Inches.	12½	13	13½	14	14½	15
Width of the Crutch..... } Inches.	11	11½	12	12½	13	14
Width of the middle of the Thigh... } Inches.	9¼	9½	10	10½	11	11¾
Width of the Bottom..... } Inches.	8	8¼	8½	8¾	9	9½
Length of the Leg Seam..... } Inches.	26	27	28	29	30	31½
Length of the Waistband..... } Inches.	16	16½	17	17½	18	19
Quantity each size will take of 27 inch Cloth or Cassimere..... } Yards.	17/8	1 1/8	2 1/8	2 3/8	2 5/8	2 1/2
Quantity each size will take of 18 inch velveteen or cord..... } Yards.	2 1/8	3	3 1/8	3 5/8	3 1/2	3 3/4

MENS' FINE TROWERS.

THESE Trowsers are made of 27 inch Plain or Cassimere, and are laid down the same as Breeches, that is, the 3rd and 5th size foreparts with side seams in the centre of your Piece, and the 5th and 3rd hindpart to the edge of the cloth, with the bottom of the forepart half way down the seat of the hindpart; and that will allow a sufficient quantity to make them handsome. The 2nd and 6th will come the same way. The proper quantities are given in the Table. The same method will serve for 27 inch Cord or Velveteen.

MEN'S DUCK OR FUSTIAN TROUSERS.

(PLATE XV.)

SIZES.	1	2	3	4	5	6
	Inches.	Inches.	Inches.	Inches.	Inches.	Inches.
Length from the hip to the Bottom..	35	36 $\frac{1}{4}$	37 $\frac{1}{2}$	38 $\frac{3}{4}$	40 $\frac{1}{4}$	42
Width of the top of the Forepart....	8 $\frac{1}{2}$	8 $\frac{3}{4}$	9 $\frac{1}{4}$	9 $\frac{3}{4}$	10 $\frac{1}{4}$	10 $\frac{3}{4}$
Height of the Falldown from the } Crutch..... }	11 $\frac{1}{2}$	12	12 $\frac{1}{2}$	13	13 $\frac{1}{2}$	14
Width of the Crutch.....	11 $\frac{1}{4}$	11 $\frac{1}{2}$	12	13	13	14
Width of the middle of Thigh.....	9 $\frac{1}{4}$	9 $\frac{1}{2}$	10	10 $\frac{1}{2}$	11	11 $\frac{1}{2}$
Width of the Bottom.....	8	8 $\frac{1}{4}$	8 $\frac{1}{2}$	8 $\frac{3}{4}$	9	9 $\frac{1}{2}$
Length of the Leg Seam.....	26	27	28	29	30	31
Length of the Waistband.....	16	16 $\frac{1}{2}$	17	17 $\frac{1}{2}$	18	18 $\frac{1}{2}$
	Yards.	Yards.	Yards.	Yards.	Yards.	Yards.
Quantity each size will take of 27 } inch Duck or Fustian..... }	17 $\frac{7}{8}$	1 $\frac{5}{8}$	2 $\frac{1}{8}$	2 $\frac{3}{8}$	2 $\frac{5}{8}$	2 $\frac{1}{2}$
Quantity each size will take of 27 } Inch Fustian for Overalls..... }	2 $\frac{3}{8}$	2 $\frac{3}{8}$	2 $\frac{5}{8}$	2 $\frac{3}{4}$	2 $\frac{7}{8}$	3

MEN'S DUCK OR FUSTIAN TROUSERS.

THESE Trowsers are cut without side seams from 1 to 4; and the 5th and 6th must be cut with side seams, unless the Fustian or Duck is 28 or 29 inches wide, which is seldom the case. The hollowing of the legs will make waistband, waistband linings, seat pieces, &c.

Overalls will take the quantity, with flies &c.

SEAMEN'S CLOTH TROUSERS.

SIZES.	1	2	3	4	5	6
	Inches.	Inches.	Inches.	Inches.	Inches.	Inches.
Length from the hip to the bottom..	36	37 $\frac{1}{4}$	38 $\frac{1}{2}$	40	41 $\frac{1}{2}$	43
Width of the top of the Forepart....	8 $\frac{3}{4}$	9	9 $\frac{1}{4}$	9 $\frac{1}{2}$	9 $\frac{3}{4}$	10 $\frac{1}{4}$
Height of the Falldown from the } Crutch.....	12	12 $\frac{1}{2}$	13	13 $\frac{1}{2}$	14	14 $\frac{1}{2}$
Width of the Crutch.....	12	12 $\frac{1}{2}$	13	13 $\frac{1}{2}$	14	14 $\frac{1}{2}$
Width of the middle of the Thigh...	10	10 $\frac{1}{2}$	11	11 $\frac{1}{2}$	12	12 $\frac{1}{2}$
Width of the Bottom.....	8 $\frac{1}{2}$	9	9 $\frac{1}{2}$	10	10 $\frac{1}{2}$	11
Length of the Leg Seam.....	26	27	28	29	30	31
Length of the Waistband.....	16	16 $\frac{1}{2}$	17	17 $\frac{1}{2}$	18	19
	Yards.	Yards.	Yards.	Yards.	Yards.	Yards.
Quantity each size will take of 27 } inch Blue Plain.....	2	2 $\frac{1}{8}$	2 $\frac{1}{8}$	2 $\frac{1}{4}$	2 $\frac{3}{8}$	2 $\frac{1}{2}$

SEAMEN'S CLOTH TROUSERS.

THESE Trousers are cut without side seams, the same as the **Fustian Trousers**, only broader in the legs and with broad fall-downs. The quantity for 5 and 6 should be 28 or 29 inches, if possible, as that will make them much handsomer.

BOY'S FINE TROUSERS.

SIZES.	6	7	8	9	10	11	12
	Inches.	Inches.	Inches.	Inches.	Inches.	Inches.	Inches.
Length from the hip to the Bottom...	27	28½	30	31½	33	34½	36
Width of the top of the Forepart....	7	7¼	7½	7¾	8	8¼	8½
Height of the Falldown from the } Crutch.....	9½	10	10½	11	11½	12	12½
Width of the Crutch.....	9¼	9½	9¾	10	10¼	10½	11
Width of the middle of Thigh.....	7½	7¾	8	8¼	8½	9	9½
Width of the Bottom.....	6	6¼	6½	6¾	7	7¼	7½
Length of the Leg Seam.....	20	21	22	23	24	25	26
Length of the Waistband.....	12½	13	13½	14	14½	15	15½
	Yards.	Yards.	Yards.	Yards.	Yards.	Yards.	Yards.
Quantity each Size will take of 27 } Inch Cloth or Cassimere.....	1¾	1¾	1½	1¾	1½	1¾	1¾
Quantity each Size will take of 18 } Inch Cord or Velveteen..	1¾	1¾	2	2¾	2¾	2¾	2¾

BOYS' FINE TROUSERS.

THESE Trousers will come out of the 27 inch Stuff, by placing the large pattern to the extremity of the cloth, both ways—and the small one in the middle. The 18 inch will come out, with very little piecing, by laying down the small and large patterns together, and make the Trousers complete.

BOYS' DUCK OR FUSTIAN TROUSERS.

(PLATE XVI.)

SIZES.	6	7	8	9	10	11	12
	Inches.	Inches.	Inches.	Inches.	Inches.	Inches.	Inches.
Length from the Hip to the Bottom	26	27 $\frac{1}{2}$	29	30 $\frac{1}{2}$	32	33 $\frac{1}{2}$	35
Width of the top of the Forepart....	7	7 $\frac{1}{4}$	7 $\frac{1}{2}$	7 $\frac{3}{4}$	8	8 $\frac{1}{4}$	8 $\frac{1}{2}$
Height of the Falldown from the } Crutch.....	9	9 $\frac{1}{2}$	10	10 $\frac{1}{2}$	11	11 $\frac{1}{2}$	12
Width of the Crutch.....	9 $\frac{1}{4}$	9 $\frac{1}{2}$	9 $\frac{3}{4}$	10	10 $\frac{1}{4}$	10 $\frac{1}{2}$	11
Width of the middle of the Thigh...	7 $\frac{1}{2}$	8	8 $\frac{1}{4}$	8 $\frac{1}{2}$	8 $\frac{3}{4}$	9	9 $\frac{1}{4}$
Width of the Bottom.....	6	6 $\frac{1}{4}$	6 $\frac{1}{2}$	6 $\frac{3}{4}$	7	7 $\frac{1}{4}$	7 $\frac{1}{2}$
Length of the Leg Seam.....	20	21	22	23	24	25	26
Length of the Waistband.....	12 $\frac{1}{2}$	13	13 $\frac{1}{2}$	14	14 $\frac{1}{2}$	15	15 $\frac{1}{2}$
	Yards.	Yards.	Yards.	Yards.	Yards.	Yards.	Yards.
Quantity each size will take of 27 } inch Fustian or Duck.....	1 $\frac{3}{16}$	1 $\frac{1}{4}$	1 $\frac{5}{16}$	1 $\frac{7}{16}$	1 $\frac{9}{16}$	1 $\frac{11}{16}$	1 $\frac{7}{8}$

BOYS' DUCK OR FUSTIAN TROUSERS.

THESE Trousers will come out as laid down in the Plate, (No. XVI.) They will fit close up, and be made handsomely out of the quantity given in the annexed Table.

BOYS' DENMARK AND RIFLE DRESSES.

(PLATE XVII.)

SIZES.	1	2	3	4	5	6	7
	Inches.	Inches.	Inches.	Inches.	Inches.	Inches.	Inches.
Length of the back of the Jacket....	10	10½	11	11½	12	12½	13½
Half width of the Back between the } Shoulders.....	3¼	3½	3¾	4	4¼	4½	5
Length of the Sleeve, from the back } seam to the Elbow.. }	11¼	12	12¾	13½	14¼	15	16
Full length of the Sleeve, including } the Cuff.....	18	19	20	21	22	23½	25
Width of the Sleeve at top, from } point to point.....	5½	5¾	6	6¼	6½	6¾	7
Width of the small of the Sleeve....	4	4⅛	4¼	4⅜	4½	4⅝	4¾
Half round the Breast.....	11¾	12¼	12¾	13¼	13¾	14¼	14¾
Half round the Waist.....	11½	12	12½	13	13½	14	14½
Length of the side seam of the Trow- } sers, from the hip to the bottom }	24	25½	27	29	31	33	35
Height of the Falldown from the } Crutch.....	11½	12¼	13	14	15	16	17
Width of the Crutch.....	7½	8	8½	9	9½	10	10½
Width of the Bottom.....	5½	5¾	6	6¼	6½	7	7½
Length of the Leg Seam.....	14	15	16	17	18½	20	21½
Length of the Dress, from the } Shoulder seam to the bottom... }	32	33½	35	37	39	41	43
Half width of the top of the Trowsers	11½	12	12½	13	13½	14	14½
Quantity each Size will take of 27 } inch Cloth or Fustian, for Den- } mark Dresses.....	1⅛	1¾	1⅞	2	2⅛	2¼	2⅞
Quantity each Size will take of 27 } inch stuff, for Rifle Dresses—18 } inch, one-third more.....	1⅓	1⅞	2	2⅛	2¼	2⅝	2⅞

BOYS' DENMARK AND RIFLE DRESSES.



THERE is a plate for laying down Boys' Dresses, on 27 inch stuff. Both the Denmark and Rifle Dresses may be cut by the same Trowsers and Sleeves. The Rifle Jackets may be formed by the foreparts of the Denmark Jacket, only cut a skirt about three inches long. This may be done by a lay-down of the 3rd and 5th sizes of the Denmark Dress. The 3rd size sleeves, cuffs, and collars, to be taken at the end of the piece ; and other sizes in proportion.

BOYS' HUSSAR SUITS.

SIZES.	6	7	8	9	10
	Inches.	Inches.	Inches.	Inches.	Inches.
Length of the back of the Jacket....	$12\frac{1}{2}$	$13\frac{1}{4}$	14	$14\frac{3}{4}$	$15\frac{1}{2}$
Half width of the Back between the } Shoulders.....	$4\frac{1}{2}$	$4\frac{3}{4}$	5	$5\frac{1}{4}$	$5\frac{1}{2}$
Length of the Sleeve, from the back } seam to the Elbow.. }	16	$16\frac{1}{2}$	17	$17\frac{1}{2}$	18
Full length of the Sleeve, including } the Cuff.....	25	26	27	28	29
Width of the Sleeve at top, from } point to point.....	7	$7\frac{1}{4}$	$7\frac{1}{2}$	$7\frac{3}{4}$	8
Width of the small of the Sleeve... .	$4\frac{3}{4}$	5	$5\frac{1}{4}$	$5\frac{1}{2}$	$5\frac{3}{4}$
Half round the Breast.....	$13\frac{1}{2}$	14	$14\frac{1}{2}$	15	$15\frac{1}{2}$
Half round the Waist.....	13	$13\frac{1}{2}$	14	$14\frac{1}{2}$	15
Length of the Waistcoat from the } point of the Shoulder to the } bottom of the Forepart.....	12	$12\frac{3}{4}$	$13\frac{1}{2}$	$14\frac{1}{4}$	15
Half round the Breast.....	13	$13\frac{1}{2}$	14	$14\frac{1}{2}$	15
Half round the Waist.....	$12\frac{1}{2}$	13	$13\frac{1}{2}$	14	$14\frac{1}{2}$

BOYS' HUSSAR SUITS.



THE Trowsers to complete this suit are cut the same as **Boys' fine trowsers**, (Table 35,) only two inches higher, as the waist is short. The quantities of 27 inch plain, for each size, must be as follows :

SIZES.	6	7	8	9	10
	Yards.	Yards.	Yards.	Yards.	Yards.
	$3\frac{1}{8}$	$3\frac{1}{4}$	$3\frac{1}{2}$	$3\frac{3}{4}$	4

These Suits consist of three Garments—a round Jacket, Waistcoat, and Trowsers. The Jacket may be made with a rolling collar or a smart coat collar.

MEN'S SLEEVED WAISTCOATS.

SIZES.	1	2	3	4	5	6
Length from the Shoulder point, to the Bottom..... } Inches. Inches. Inches. Inches. Inches. Inches.	19	20	21	22	23	24
Half width of the back between the Shoulders..... } Inches. Inches. Inches. Inches. Inches. Inches.	5 $\frac{1}{2}$	6	6 $\frac{1}{2}$	7	7 $\frac{1}{2}$	8
Length of the Sleeve, from the back seam to the Elbow..... } Inches. Inches. Inches. Inches. Inches. Inches.	20 $\frac{1}{2}$	21	21 $\frac{1}{2}$	22	22 $\frac{1}{2}$	23
Full length of the Sleeve.....	30	31	32	33	34	35
Width of the Sleeve at the top, from point to point..... } Inches. Inches. Inches. Inches. Inches. Inches.	8	8 $\frac{1}{2}$	9	9 $\frac{1}{2}$	10	10 $\frac{1}{2}$
Width of the small of Sleeve.....	6 $\frac{1}{2}$	6 $\frac{3}{4}$	7	7 $\frac{1}{4}$	7 $\frac{1}{2}$	8
Half round the Breast.....	17	18	19	20	21	22
Half round the Waist.....	16	17	18	19	20	21
Quantity each size will take of 27 inch Stuff..... } Yards. Yards. Yards. Yards. Yards. Yards.	$\frac{9}{16}$	$\frac{5}{8}$	$\frac{11}{16}$	$\frac{3}{4}$	$\frac{13}{16}$	$\frac{7}{8}$

MEN'S SLEEVED WAISTCOATS.

THESE Waistcoats require $1\frac{3}{8}$ yard of 27 inch Fustian to make the back and sleeve, these being generally made of that material.

The Waistcoats may be cut nearly on the same plan as the Men's Single-breasted, but with the back and the shoulder of the forepart wider, to form a close sye, and to allow the sleeve to be easy.

MEN'S SINGLE-BREASTED WAISTCOATS.

(PLATE XVIII.)



SIZES.	1	2	3	4	5	6
Length of the Shoulder Point to the Bottom..... } Inches.....	19	20	21	22	23	24
Half round the Breast..... } Inches.....	17	18	19	20	21	22
Half round the Waist..... } Inches.....	16	17	18	19	20	21
Quantity each size will take of 27 inch } Yards.....	$\frac{1}{2}$	$\frac{9}{16}$	$\frac{5}{8}$	$\frac{11}{16}$	$\frac{3}{4}$	$\frac{13}{16}$

MEN'S
SINGLE-BREASTED WAISTCOATS.

THESE Waistcoats require one yard of 32 inch Cotton, which will make the becks, lining, and stays. The lay-down of Waistcoats, in the 18th Plate, will give a sufficient quantity for collar, facings, and whelts, which will make them handsome.

MEN'S DOUBLE-BREADED WAISTCOATS.

SIZES.	1	2	3	4	5	6
Length from the Shoulder point, to the Bottom.....}	Inches. 19	Inches. 20	Inches. 21	Inches. 22	Inches. 23	Inches. 24
Half round the Breast.....	17	18	19	20	21	22
Half round the Waist.....	16	17	18	19	20	21
Quantity each Size will take of 27 Inch Stuff.....}	Yards. $\frac{5}{8}$	Yards. $\frac{11}{16}$	Yards. $\frac{3}{4}$	Yards. $\frac{13}{16}$	Yards. $\frac{7}{8}$	Yards. $\frac{15}{16}$

**MEN'S
DOUBLE-BREADED WAISTCOATS.**



THESE Waistcoats will take $1\frac{1}{8}$ yard of 36 inch Cotton : which will make the backs, linings, and stays. To make the Waistcoat double-breasted, each forepart must be two inches wider than for the single-breasted.

L

BOYS' SINGLE-BREADED WAISTCOATS.

SIZES.	6	7	8	9	10	11	12
Length of the Shoulder Point to the Bottom..... } Inches.	13 $\frac{1}{2}$	14 $\frac{1}{4}$	15	15 $\frac{3}{4}$	16 $\frac{1}{2}$	17 $\frac{1}{4}$	18
Half round the Breast..... } Inches.	13 $\frac{1}{2}$	14	14 $\frac{1}{2}$	15	15 $\frac{1}{2}$	16	16 $\frac{1}{2}$
Half round the Waist..... } Inches.	13	13 $\frac{1}{2}$	14	14 $\frac{1}{2}$	15	15 $\frac{1}{2}$	16
Quantity each size will take of 27 inch Stuff..... } Yards.	$\frac{5}{16}$	$\frac{6}{16}$	$\frac{7}{16}$	$\frac{7}{16}$	$\frac{1}{2}$	$\frac{1}{2}$	$\frac{9}{16}$

BOYS'
SINGLE-BREASTED WAISTCOATS.

TAKING the Sizes one with another, these
Waistcoats will require $\frac{3}{4}$ yard of 36 inch Cotton,
to make backs, linings, and stays.

BOYS' MILLWRIGHTS' FROCKS.

(PLATE XIX.)

SIZES.	7	8	9	10	11	12
	Inches.	Inches.	Inches.	Inches.	Inches.	Inches.
Length of the Back.....	15 $\frac{1}{4}$	16	16 $\frac{3}{4}$	17 $\frac{1}{2}$	18 $\frac{1}{4}$	19
Half width of the back between } the Shoulders..... }	5 $\frac{1}{4}$	5 $\frac{1}{2}$	5 $\frac{3}{4}$	6	6 $\frac{1}{4}$	6 $\frac{1}{2}$
Length of the Sleeve, from the } middle of the back to the Elbow }	16 $\frac{1}{2}$	17	17 $\frac{1}{2}$	18	18 $\frac{1}{2}$	19
Full length of the Sleeve.....	26	27	28	29	30	31
Width of the Sleeve at the top, } from point to point..... }	6 $\frac{1}{2}$	6 $\frac{3}{4}$	7	7 $\frac{1}{4}$	7 $\frac{1}{2}$	7 $\frac{3}{4}$
Width of the small of Sleeve.....	5 $\frac{1}{4}$	5 $\frac{1}{2}$	5 $\frac{3}{4}$	6	6 $\frac{1}{4}$	6 $\frac{1}{2}$
Half round the Breast.....	17 $\frac{1}{2}$	18	18 $\frac{1}{2}$	19	19 $\frac{1}{2}$	20
Half round the Waist.....	16 $\frac{1}{2}$	17	17 $\frac{1}{2}$	18	18 $\frac{1}{2}$	19
	Yards.	Yards.	Yards.	Yards.	Yards.	Yards.
Quantity each size will take of 27 } inch Fustian..... }	1 $\frac{9}{8}$	1 $\frac{5}{8}$	1 $\frac{11}{8}$	1 $\frac{3}{4}$	1 $\frac{7}{8}$	2

BOYS' MILLWRIGHTS' FROCKS.

THESE Frocks will come out according to the directions laid down in the 19th Plate, and the quantities given in the annexed Table will make them full and handsome.

MEN'S MILLWRIGHTS' FROCKS.

(PLATE XX.)

SIZES.	1	2	3	4	5	6
	Inches.	Inches.	Inches.	Inches.	Inches.	Inches.
Length of the Back.....	20	21	22	23	24	25
Half width of the Back between the } Shoulders.....	$6\frac{1}{2}$	7	$7\frac{1}{2}$	8	$8\frac{1}{2}$	9
Length of the Sleeve, from the mid- } dle of the back to the Elbow... }	$20\frac{1}{2}$	21	$21\frac{1}{2}$	22	$22\frac{1}{2}$	23
Full length of the Sleeve,	31	32	33	34	35	36
Width of the Sleeve at top, from } point to point.....	8	$8\frac{1}{2}$	9	$9\frac{1}{2}$	$9\frac{3}{4}$	10
Width of the small of the Sleeve....	$6\frac{1}{2}$	$6\frac{3}{4}$	7	$7\frac{1}{4}$	$7\frac{1}{2}$	$7\frac{3}{4}$
Half round the Breast.....	20	21	22	23	24	25
Half round the Waist.....	19	20	21	22	23	24
Quantity each Size will take of 27 } Inch Fustian.....	$2\frac{3}{16}$	$2\frac{1}{4}$	$2\frac{5}{16}$	$2\frac{3}{8}$	$2\frac{1}{2}$	$2\frac{5}{8}$

MEN'S MILLWRIGHTS' FROCKS.

THESE Frocks will come out as shewn in the Plate, and no further explanation will be necessary.

MEN'S ROUND FROCKS.

$1\frac{3}{4}$ yard will make 14 nails	}	in the length of the body.
$1\frac{7}{8}$ 15 nails		
2 yards..... 1 yard		

The above are the three usual lengths for Round Frocks. The sleeves are 20 inches long and 9 wide. Take 9 inches from the sleeve, and that will make the finishings. The collar will be 18 inches long and $4\frac{1}{2}$ wide, the wristband 10 inches long and $2\frac{1}{2}$ wide, the sleeve gusset 5 inches square, the shoulder strap 10 inches long and 2 wide—which will come off the sleeve gusset—the neck gusset 4 inches square, and the lappel 9 inches long and $2\frac{1}{2}$ wide: and this will make the frock complete.

The quantity required for the frock 15 nails long, will be 3 yards.

FULL WORKED
MEN'S WAGGONERS' FROCKS.

THE best width Stuff for cutting these Frocks is $\frac{4}{7}$ Duck. They want no gores, and the lengths generally made are, 18, 19, 20, 21, 22, and 23 nails, taking the full width of the stuff.

The sleeve must be 22 inches long, in consequence of the Frock being required to be very much gathered in at the top, to make them handsome, and 12 inches wide, to allow for plenty of gathers at the sleeve hand. The back and front are made alike. The collars to be double, and cut 12 inches long and 5 deep; the shoulder straps 9 inches long and 6 wide, to allow room for plenty of work—the sleeve gusset 6 inches square—the wristband 10 inches long and 3 wide—and the third from the sleeve will make the finishings. They require no neck gusset. The 20 nails will take $3\frac{1}{2}$ yards, and if these Frocks are cut out of any other width, they must be gored to bring them to the same width.

M

BOY'S WAGGONERS' FROCKS.

THESE Frocks are cut from 27 inch Duck. The usual lengths of them are 16, 17, and 18 nails, and the sleeves, 19, 20, and 21 inches. The bodies are to be the width of the stuff, and the sleeves 18in. wide, leaving 9 inches for finishing. The collar gusset &c. to be cut in proportion to the Men's. The 17 nail Frock will take three yards and a quarter.

MEN'S RED BAIZE SHIRTS.

Cut from Baize, $1\frac{1}{2}$ yard wide.



THE bodies of these Shirts are one yard long, and the sleeves 20 inches. Three sleeves will come out of the width of the stuff. The collars, (which are generally lined with remnants of striped cotton,) must be 18 inches long, and $4\frac{1}{2}$ wide—the gussets 5 inches square—the wristbands $9\frac{1}{2}$ inches long and 2 wide (that is 4 inches in the single)—neck gussets 4 inches square—and the shoulder straps 10 inches long and 2 wide.

The above Shirts will require $1\frac{1}{2}$ yard of $\frac{6}{7}$ Baize. The same directions will answer for Negro's Shirts.

MEN'S STRIPED SHIRTS.

THESE Shirts are generally made of what is called $\frac{1}{4}$ Cotton ; and the Cottons are usually 40 or 41 inches wide, which is the required length of the Shirt—the body $1\frac{1}{2}$ yard and the sleeve $\frac{1}{2}$ a yard—the collar $17\frac{3}{4}$ inches long, and $4\frac{1}{2}$ wide in the double—the sleeve gussets 5 inches square—the wristband 9 inches long and $2\frac{1}{4}$ wide—the neck gussets 4 inches square—the shoulder straps 10 inches long and 2 wide—and the side gussets $1\frac{1}{2}$ inch square. These Shirts will take $2\frac{1}{4}$ yards.

MEN'S WHITE COTTON SHIRTS.

OF these Shirts $8\frac{1}{2}$ yards of 27 inch wide Cotton will cut 4 bodies—the sleeves 20 inches long. Take off a third of the sleeves, and that will finish the Shirt. The collar will be $17\frac{1}{2}$ inches long and $4\frac{1}{2}$ wide, in the double—the sleeve gusset 6 inches square—the wristbands 9 inches long and $4\frac{1}{4}$ wide—the shoulder straps 10 inches long and 2 wide—the neck gusset 4 inches square—and the side bits $1\frac{1}{2}$ square.

The above Shirts will take $3\frac{1}{4}$ yards each.

MEN'S $\frac{7}{8}$ IRISH LINEN SHIRTS.

OF these Shirts $8\frac{3}{4}$ yards of Irish will cut 4 bodies, the sleeve 21 inches. Take 12 inches from the width of the stuff, leaving about 19 inches for the sleeves, which will be $17\frac{1}{2}$ inches long, and 6 wide, in the double. The sleeve gussets are to be 6 inches square, the wristbands 9 inches long and 3 wide, in the double, the neck gussets 4 inches square, the shoulder straps 10 inches long and 3 wide, the side bits 2 inches square, and the binders 12 inches long and 4 wide. This will make the Shirts complete.

These Shirts will take $3\frac{1}{2}$ yards for each. The frills will require 2 breadths of Cambric, 4 inches broad.

BOYS' SHIRTS.

	No. 1.		No. 2.		No. 3.	
	Length	Width.	Length	Width.	Length	Width.
	Inches.	Inches.	Inches.	Inches.	Inches.	Inches.
Bodies.....	34	24	30	22	26	20
Sleeves.....	18	7½	16	6½	14	6
Collars.....	16	4	15	3½	14	3½
Wristbands....	8	2	7½	2	7	2
Sleeve Gussets	Square.		Square.		Square.	
	5		5		5	
Neck Gussets.....	3		3		3	
Shoulder Straps.....	Length	Width.	Length	Width.	Length	Width.
	8	1½	7½	1½	7½	1½

BOYS' SHIRTS.

YARD wide Cotton or Linen is the most proper width for Boys' Shirts, as the sleeve will then come off the body of No. 3 for No. 1, and from No. 1 for No. 3, and No. 2 will make itself up.

The Shirts No. 2 will take $1\frac{5}{8}$ yard for each. The others will differ in proportion, but this is the average.

LADIES GIG COATS.

(PLATE XXI.)

SIZES.	3	4	5	6
	Inches.	Inches.	Inches.	Inches.
Length of the Back.....	50	52	54	56
Half width of the back between } the Shoulders.....	$6\frac{1}{2}$	7	$7\frac{1}{2}$	8
Length of the Sleeve, from the } middle of the back to the Elbow	20	$20\frac{3}{4}$	$21\frac{1}{2}$	$22\frac{1}{4}$
Full length of the Sleeve, including } the Cuff.....	31	32	33	34
Width of the Sleeve at the top, } from point to point.....	9	$9\frac{1}{4}$	$9\frac{1}{2}$	10
Width of the small of Sleeve.....	$6\frac{1}{2}$	$6\frac{3}{4}$	7	$7\frac{1}{2}$
Half round the Breast.....	24	25	26	27
Half round the Bottom.....	36	38	40	42
	Yards.	Yards.	Yards.	Yards.
Quantity each size will take of 54 } inch Coating, and a Cape 10 } inches deep.....	$2\frac{5}{8}$	$2\frac{3}{4}$	$2\frac{7}{8}$	3

LADIES' GIG COATS.

THESE Ladies' Coats will come out as shewn in the plate (No. 21.) each bearing an equal proportion;—but if more capes are required, the quantity will, of course, vary according to the depth of the cape.

LADIES' CORSETS.

(PLATE XXII.)

THE 28 inch Corsets are about the middle size, and these are cut according to the following dimensions: 16 inches long in front, 17 inches long behind, 38 inches round the bottom— $7\frac{1}{2}$ inches will be the half width of the forepart, at the bottom, and two gores let in 4 inches, $2\frac{1}{2}$ inches wide at the top of each gore, which will make half the width of the front $2\frac{1}{2}$ inches. There is another kind, of a different make, called a Jubilee front; they require a seam up the forepart, and $2\frac{1}{2}$ inches allowed on each side, to make them the proper width at the top of the forepart—the back $4\frac{3}{4}$ inches wide between the shoulders—the scye 6 inches wide, and $4\frac{3}{4}$ inches deep. The size is taken in the small of the waist.

These Corsets will take a yard of 18 inch satteen—the sizes are from 24 to 32 inches, and they vary one inch each in width, and a quarter of an inch in length.

LADIES' SHIFTS.



THE length of these is 45 inches ; the best width to cut is the 36 inch Linen or Cotton. Divide $3\frac{3}{4}$ yards into 3 lengths—then split one breadth into two halves ; take the gores off the other two breadths, 8 inches wide at one end and one inch at the other. Put one gore each side the half breadths, and that will make the shift 20 inches wide at the top, and 34 at the bottom, which is a very good size ; the sleeves to be 7 inches long, and 6 wide, and the gussets 5 inches square.

The shifts will take 2 yds. 1-sixteenth each.

GIRLS' CORSETS.

(PLATE XXIII.)



THESE Corsets are for Girls from 7 to 16 years of age ; they are from 19 to 24 inches in breadth, and from 8 to 12 inches in depth, and they are divided into six different sizes, from 7 to 12, each bearing an equal proportion, as given in the plate (No. 23.) They will take, one size with another, 11 nails, and the same quantity for lining. They have but one bosom gore on each side, as they do not require the fulness of the Women's, either at the top or at the bottom. The 7th size are 19 inches round the waist, and 24 round the bottom, and the 12th are 24 inches in the waist, and 30 round the bottom.

GIRLS' SHIFTS.

THE length of the Girls' Shifts is $31\frac{1}{2}$, 36, and $40\frac{1}{2}$ inches. For the $40\frac{1}{2}$ inch long, 33 inches is the proper width. Cut $3\frac{3}{8}$ yards, and divide into three breadths—split one breadth, and take off the two gores from the two breadths, one inch wide at one end, $7\frac{1}{2}$ inches at the other ; this will make the shift 18 inches wide at the top, and 31 at the bottom ; the sleeve to be 6 inches long and $5\frac{1}{2}$ wide ; the gusset $4\frac{1}{2}$ inches square.

The 36 inch are cut across 36 inch stuff, and are made 17 inches wide at the top and 29 at the bottom.

The $31\frac{1}{2}$ inch are made 16 inches at the top and 26 at the bottom.

The $31\frac{1}{2}$ inch are made 16 inches at the top and 26 at the bottom.

The 28 inch Irish Linen or Cotton may be cut the same as the $40\frac{1}{2}$ inch, by taking 3 breadths and dividing one, and taking the gores off the other two. The sleeves 5 inches long, and 5 inches wide.

The above shifts will fit girls from 10 to 15 or 16 years of age.

LADIES' CLOAKS.

(PLATE XXIV.)

THESE Cloaks are cut from 8-qr. Cloaking, on the plan laid down in the plate. First open the piece, and form the 20 nail cloak, as explained by the plate—carry a line from the right to the centre line, and from that, mark the cloak both ways; the 20 nail cloak will take 2 yards, and every nail longer will take $\frac{1}{8}$ more; the hood will come out of the pieces. Make the hood 16 inches deep, and 12 wide.



GIRLS' CLOAKS.

GIRLS' Cloaks, which are made from 7-qr. cloaking, are generally cut from 12 to 16 nails long, on the same plan as the Women's—they will take $1\frac{3}{8}$ yard each. The hood must be in proportion to the Women's—the 12 nails will be 36 inches half round the bottom, and the 16 nails 50 inches—and this will be a good size cloak.

WOMEN'S GOWNS.

SIZES.	3	4	5
	Inches.	Inches.	Inches.
Length of the Back.....	10	11	12
Half width of the back between the Shoulders..... }	5	5½	6
Length of the Sleeve, from the middle of the back to the Elbow }	17	18	19
Width of the Sleeve at the top, from point to point..... }	8	8½	9
Width of the small of Sleeve.....	6	6½	7
Half round the Breast.....	18	19	20
Half round the Waist.. .. .	16	17	18

WOMENS' GOWNS.

THESE directions apply to such Gowns as are frequently wanted for the purpose of being presented to Charitable Institutions, and which are usually made of brown serge, or camlet. If serge, 30 inches wide, then $2\frac{1}{2}$ breadths must be allowed for the skirt. If camlet, from 18 to 20 inches wide, the skirt will require 4 breadths. The length of the skirts will be 40, $42\frac{1}{2}$, and 45 inches. The quantity of serge will be $4\frac{1}{2}$ yards; or of camlet $6\frac{3}{4}$ yards—the body-lining will take a yard of 4-qr. brown irish.

GIRL'S GOWNS.

SIZES.	10	11	12
	Inches.	Inches.	Inches.
Length of the Back.....	8½	9	9½
Half width of the back between } the Shoulders..... }	4	4½	4½
Length of the Sleeve, from the } middle of the back to the Elbow }	14	15	16
Width of the Sleeve at the top, } from point to point..... }	6½	7	7½
Width of the small of Sleeve.....	5	5½	5¾
Half round the Breast.....	14	15	16
Half round the Waist.. .. .	13	14	15

GIRLS' GOWNS.

THESE are frequently made for Charities. They require $3\frac{1}{2}$ breadths of camblet—to make the skirt with an apron, the half-breadth must be put behind, which will allow a breadth to come in front for the apron. The length of the skirt will be 30, 32, or 34 inches.

These Gowns will take $4\frac{1}{2}$ yards each size, and $\frac{5}{8}$ of 4-qr. brown irish for lining.

MENS' CAMBLET BOAT CLOAKS.

(PLATE XXV.)



THIS is called a full half-circle cloak. The length to be $58\frac{1}{2}$ inches, and the depth of the neck 9 inches. They will take 12 yards of camblet, 20 inches wide, and $4\frac{1}{2}$ yards of 6-gr. baize to line them.

Directions for Cutting out.

Fix your line at the full length of the cloak, and depth of the neck—then carry it round till you come straight to the top of the neck, which will bring the cloak into the half circle—slope the neck 12 inches before, and that will give the

neck 36 inches in the full round. Round the bottom of the cloak will be 6 yards ; and the cape will be 18 inches deep. (See the plate.)

There is another camblet garment called a Sulky, or Loose Coat, which may be cut in every respect by the same pattern as Gentlemen's Gig Coats. These garments will take 9 yards, of the above width, and $3\frac{1}{2}$ yards of 6-qr. baize for lining.

MEN'S KNEE CAPS.

SIZES	3	4	5
	Inches.	Inches.	Inches.
Lengths.....	18	19½	21
Half width above the knee	8½	9	9½
Half width of the Calf.....	7½	8	8½
Half width of the bottom..	7	7½	8
Quantity for each, of 27in. Cloth...	1yd.	1½	1¼

These Knee-caps will come 9 or 10 inches above the small of the knee, and the remainder of the length downwards, and for this they will be a good length. They are generally worn by travellers, over boots, which the size will allow; and the above quantity will be sufficient to make them, in the usual way, with fly and strap to the hip.

MEN'S LONG GAITERS.

SIZES.	2	3	4	5
	Inches.	Inches.	Inches.	Inches.
Length	14	15	16	17
Half width of the knee.....	$6\frac{1}{4}$	$6\frac{1}{2}$	$6\frac{3}{4}$	$7\frac{1}{4}$
Half width of the calf..	$6\frac{1}{2}$	$6\frac{3}{4}$	$7\frac{1}{4}$	$7\frac{3}{4}$
Half width of the small of the leg ..	$4\frac{1}{2}$	$4\frac{1}{2}$	$4\frac{3}{4}$	$5\frac{1}{4}$
Length from heel to the top of Foot	8	$8\frac{1}{2}$	9	$9\frac{1}{2}$
	Yards.	Yards.	Yards.	Yards.
Quantity each Size will take of 27 } Inch Cloth	$\frac{9}{16}$	$\frac{10}{16}$	$\frac{11}{16}$	$\frac{3}{4}$

MEN'S SHORT GAITERS.

SIZES.	2	3	4	5
	Inches.	Inches.	Inches.	Inches.
Length,.....	8	$8\frac{1}{2}$	9	$9\frac{1}{2}$
Half width at the top.....	$5\frac{1}{2}$	$5\frac{3}{4}$	6	$6\frac{1}{4}$
Half width—small of the leg.....	$4\frac{1}{4}$	$4\frac{1}{2}$	$4\frac{3}{4}$	$5\frac{1}{4}$
Length from the middle of the heel, to the middle of the tongue.....	8	$8\frac{1}{2}$	9	$9\frac{1}{4}$
Quantity each size will take of 27 } inch cloth..... }	Yards. $\frac{4}{16}$	Yards. $\frac{4\frac{1}{2}}{16}$	Yards. $\frac{5}{16}$	Yards. $\frac{6}{16}$

The tongue must be let into the instep about $4\frac{1}{2}$ or 5 inches, which will bring them low over the heel. The strap to be 6 inches clear from the bottom of the gaiter. The leg will be nearly the same as the long gaiter.

SPANISH COATS.

	SIZES.	
	Inches.	Inches.
Length of the Back.....	50	52
Half width of the Back between } the shoulders.....	$7\frac{1}{2}$	8
Length of the Sleeve, from the } back seam to the Elbow.....	15	16
Full length of the Sleeve including } the cuff,.....	$35\frac{1}{2}$	37
Width of the sleeve at the top from } point to point.....	11	12
Width of the small of the sleeve....	$8\frac{3}{4}$	$9\frac{1}{2}$
Width of the Breast.....	$11\frac{1}{2}$	$12\frac{1}{2}$
Half round the Breast.....	24	25
Half round the waist.....	23	24
Half round the Bottom.....	38	40
Depth of the Hood.....	12	$12\frac{1}{2}$
Width of the hood.....	11	11
Length of the collar.....	12	12
Depth of the collar.....	4	4
Depth of the eye.....	$8\frac{3}{4}$	9

THESE Coats are frequently made of 7-qr.

P

Cloth, or white Witney, and are chiefly worn in cold countries, such as Hudson's Bay &c.

They are made double-breasted, with the buttons standing 6 inches back, and are cut to fit the waist—having no plait either in the back or side seam, but are sewed to the bottom.

The 50-inch Coat will take $2\frac{2}{8}$ yards, and the 52 inch $2\frac{1}{8}$ yards.

CAPOTS.

SIZES BY THE ELL.	1	1½	2	2½	3	3½	4
	Inches.	Inches.	Inches.	Inches.	Inches.	Inches.	Inches.
Length of the Back.....	21	25½	30	34½	39	43½	48
Width of the back between the Shoulders.....	4	4½	5	5½	6	6½	7
Length of the sleeve from the Back seam to the Elbow.....	11½	14	16	17	18½	20	20
Length of the sleeve including the Cuff.....	18	21	24	27	30	33	36
Width of the Sleeve at the top, from point to point.....	6	6¾	7½	8¼	9	9¾	10½
Width of the small of Sleeve.....	4	4¾	5½	6¼	7	7¾	8½
Width of the Breast.....	7	7¾	8½	9¼	10	10¾	11½
Width of the Breast.....	11¾	13½	15¼	17	18¾	20½	22¼
Width round the Bottom.....	18	21	24	27	30	33	36
Width of the Hoods.....	7½	8¼	9	9¾	10½	11¼	12
Width of the collar.....	7	7¾	8½	9¼	10	10¾	11½

THESE coats are made of Moulton, Kersey,
or Cloth, which must be full 27 Inches wide,
or it will not cut the Garment the full size.

They are made to fit the body close, but have no plait either in the back or side seam. They are double breasted ; and the buttons of the 1-ell Coat stand $3\frac{1}{2}$ inches back, the 4-ells 5 inches, and so in proportion. The 1-ell, $1\frac{1}{2}$ -ell, and 2-ells, have 4 buttons on each side, and rosettes on the waist—the $2\frac{1}{2}$ -ells and 3-ells, 5 buttons each —and the $3\frac{1}{2}$ -ells and 4-ells, 6 buttons each. They have a stand-up Collar,—the 1-ell $1\frac{1}{2}$ inch deep—the 4-ells 3 inches deep—and so in proportion.

They are (like the Spanish Cloak) chiefly worn in cold countries.

NEGROES' JACKETS AND TROWERS.



MEN'S Negro double-breasted Jackets may be cut by the Men's Settees, but about an inch, or an inch and a half longer, and the buttons about 4 inches from the edge.

These Jackets will require $2\frac{1}{2}$ yards of 27 inch Honley or Pennystone, for the 3rd, 4th, and 5th sizes, which are the sizes generally wanted, and the other sizes in proportion. The single-breasted will require $2\frac{1}{2}$ yards of 27 inch : and each will take $1\frac{3}{4}$ yard of Long ell for Lining. Long ells are 24 Yards long and 30 Inches wide, and are usually bought by the piece.

The Trowsers may be cut the same as men's

Duck or Fustian, and will take the same quantity for each size.

Boys' Jackets may be cut the same as the Boys' Settees, only one inch longer, and will take the same quantity of stuff. The Trowsers, the same as Boys' Duck or Fustian and the same quantity.

NEGRO WOMEN'S BEDGOWNS.

THESE Gowns, we generally cut of Blue Nap, commonly called Pennystone, 27 inches wide. The nearest way to cut them is, to make the length of the gown the width of the piece, which is 27 inches: make them 22 inches wide at top and 30 inches wide at the bottom, which will be a very good size. Make the shoulder 7 inches, and that will leave 8 inches for the neck. Slope out the neck 4 inches deep before, and 2 inches behind and make a string-case round the neck to draw them close. The body will take nearly $1\frac{1}{2}$ yard, and the sleeve to be $\frac{1}{2}$ yard long make the sleeve 5 inches wide at the bottom, and $8\frac{1}{2}$ at the top in the double. They will cut one out of the other, (both bodies and sleeves) and the piece sloped out of the neck will make a small gusset. They will require 2 yards each.

NEGRO WOMEN'S PETTICOATS.

IF several of these Petticoats are wanted at the same time,—cut off 5, each a yard long—divide 1 breadth into 2 half breadths, and that will allow $2\frac{1}{2}$ breadths for each Petticoat, which will be a very good size. Plait them in at the top to a proper size—say 36 inches.

They will take $2\frac{1}{2}$ yards each.



NEGRO GIRLS' BEDGOWNS.

THESE Gowns are made of the same kind of stuff as the Women's. Cut $1\frac{1}{4}$ yard. On folding the ends together it will be $22\frac{1}{2}$ Inches long the gown 27 inches wide at the bottom. Slope out the Piece at the sides, to bring the Body to its proper shape. Cut the sleeve $13\frac{1}{2}$ inches long and 14 inches wide at the top and 9 at the bottom, which will make, together, from the neck 23 Inches. The quantity required for each Gown will be $1\frac{1}{7}$ Yard.

NEGRO GIRLS' PETTICOATS.

THE proper width for these Petticoats will be 2 Breadths of 27-Inch stuff, and the length $31\frac{1}{2}$ Inches—or $7\frac{3}{8}$ of a yard. The top to be plaited to a proper size—say 30 inches.

They will take $1\frac{3}{4}$ yard for each.

FIREMEN'S COATS.

THE waist of the 4th size Firemen's Coat is 18 inches long, and 34 inches from the middle of the back to the sleeve hands, including the cuff. The size, the same as the regular 4th size coat.

DIRECTIONS FOR CUTTING.

FIRST, cut the back from the top of the piece, in the crease with the wool to the left hand—then the top of the sleeve and the sleeve hand will run into the sye of the forepart. The skirt (14 inches long) will require 2 breaths of 7-gr. cloth, and must be gathered in with 4 rows—when pulled in close there will be 8 plaits in an inch.

These Coats are lined with serge, the cuffs and collar faced with plush, and the seams edged with cloth.

The quantity of $\frac{7}{8}$ cloth required for each coat will be $2\frac{1}{2}$ yards.

MEN'S SWANSKIN OR PORT BAIZE DRAWERS FOR SHIPPING.

SIZES	1	2	3	4	5	6
	Inches.	Inches.	Inches.	Inches.	Inches.	Inches.
Length from the hip to the knee....	23	24	25	26	27	28
Width of the top of the forepart....	9	9½	10	10½	11	11½
Height of the fall-down from the Crutch.....	8½	9	9½	10	10½	11
Width of the Crutch.....	12½	13	13½	14	14½	15
Width of the middle of the thigh....	9	9½	10	10½	11	11½
Width of the knee.....	6¾	7	7½	7¾	8	8¼
Length of the leg seam.....	16	16½	17	17½	18	18½
Length of the Waistband.....	16½	17	17½	18	18½	19
Quantity each size will take of 27 Inch Swanskin or Port Baize... }	1¼	1⅜	1½	1⅝	1¾	1⅞

The Drawers must be cut quite easy, and with a fall-down like Breeches—these are all the directions required

Explanation and Use of the Plates.

ALL the Tables of Sizes are calculated and divided by Inches, and the Quantities by the yard—and the yard is divided into halves, quarters, eighths, and sixteenths.

The Sizes are regulated by the Square Rule.

The square of a Boy's Denmark Dress will be $11\frac{1}{4}$ - $12\frac{1}{4}$ - $12\frac{3}{4}$ - $13\frac{1}{4}$ - $13\frac{3}{4}$ - $14\frac{1}{4}$ -and $14\frac{3}{4}$. These 7 different squares will form 7 different sizes. You must allow full an inch on the front line for making up. First, take two thirds from the back line for the Proof, or the front of the sye—and one third and $\frac{1}{6}$ of a third for the pivot. Take the same distance from your top Line, in a slanting position, and that will give you the two Balance Lines (See Plate VI. on which all the Lines are marked.) The same in square for all sizes and every description of close-fitting garments.

The Square for Youths' Coats will be 13 - $13\frac{3}{4}$ - $14\frac{1}{2}$ - $15\frac{1}{4}$ - 16 -and 17 -which will form the size from 7 to 12-and the squares for Men's, will be 18 - $18\frac{1}{2}$ - 19 - 20 - 21 and 22 -allowing full an inch on the front line for making up and dividing in the same manner, that is, two thirds for the proof, and one third and $\frac{1}{6}$ of a third for the pivot and that will give the two Balance Lines.

The same rule may serve for **Waistcoats, Breeches, or Trowsers.** First, take your lengths—which in men's regular **Breeches** will be **27-28-29-30-31-and 32** being the sizes from **1 to 6**—then draw a straight line across the top, and you will find your square for the **1st. size 27 inches long by 11 wide** and so the **6th size will be 32 long by 14 wide.** Take the height by the straight line, and then form your circle, which will give the proper stride. This rule will answer for **trowsers or breeches of any size.**—(See **Plate V.**)

Always keep within the square, and you will never be in error.

PLATE I. *A set of Capes.*

FIRST draw your centre line, then mark your pivot. If you want the neck for a **28 Inch square**, you must carry your compasses from the pivot down the centre line **9 inches deep**, and your half circle as laid down in the plate—then draw your proof line **2 inches from the pivot and centre**, and that will give proper fulness for your **Capes.**

PLATE II.

A **28 Inch square** reduced to an eighth, shewing the plan of the forepart, back, and the top of the back reversed, to form the neck and cape fitted to the neck—with pivot, proof, and balance line and the distances from **20 to 28 Inches** for the shoulder point and pivot.

R

PLATE III.

THIS is on a 21 Inch square reduced. Fig. 1 is the length of the back-2, half width of the back between the shoulders-3, to the elbow-4, to the sleeve hand-5, from point to point-6, the small of the sleeve-7, half width of the breast-8, half width of the waist.

PLATE IV.

THIS is for a Waistcoat 23 inches long, 21 inches the breast, and 20 inches the waist reduced to an eight in a closing position. The proof is two thirds of the breast—the pivot one third and $\frac{1}{2}$ of a third. Take the 2 balance lines from the pivot, at the top by the cross curve will strike out the neck of the forepart.

PLATE V.

THIS is for the 5th size Breeches reduced to an eighth. The waistband is 18 inches. First, form your square, which will be 14 inches by 31 take half the waist measure and $\frac{1}{2}$, which will be 10 inches, for the width of the forepart, then take half that, which will be 5 inches, for the pivot and 31 inches for the side seam—then shift the measure to P, and that will give the knee curve take 13 inches from P and form your square, $3\frac{1}{2}$ inches will form the circle, to clear the fall-down and give stride to the crutch. From the crutch to the hip will give the height of the seat.

PLATE VI.

A BOY'S 5th size Denmark Dress, in a closing position, with all the measuring lines from 1 to 14. From 1 to 2 is the length of the back from the collar seam to the bottom of the back—3 to 4, half the width of the back between the shoulders—4 to 5, to the elbow—5 to 6, to the sleeve hand, or full length of the sleeve—7, from the hind seam of the sleeve to the forearm—8, the small of the sleeve, half way from the shoulder to the elbow—9, half round the breast close under the arm—10, half round the waist, close above the top of the trowsers 11 to 12 is the length of the side of the trowsers—13, round the top of the thigh—and 14, is the full length from the shoulder seam to the bottom of the trowsers. (see table of Boy's Denmark Dresses.)

PLATE VII.

THIS sleeve is for a 2-inch breast garment, and is reduced to a third. It is $9\frac{1}{2}$ inches long by $3\frac{1}{2}$ wide. From 1 to 2 is from the top to the elbow 3 is the bottom. The straight line will give the length of the forearm seam from 2 to 5 will be the heights of the forearm—the cross line will give the size of the small—then from the cross curve, which is the pivot, will strike the round or top of the sleeve. In the same proportion sleeves of all sizes may be formed.

PLATE VIII.

THIS is a Laydown for a Gig Coat, from A to B

is the length of the back—C is half the width of the back between the shoulders—From top of sleeve to elbow, D, and from D to E, is the length of the sleeve—F, from top of hind seam to the top of the forearm—G, the small of the sleeve—H, the width of the breast-line I on the back and I on the forepart is half the size round close under the arm—and J on the back and J on the forepart is half round the bottom.

PLATE IX.

THIS is a Laydown of the 4th size surtout, with references from A to J. The quantity is 4½ yards of 27 inch cloth.

PLATE X.

A Laydown of the 4th size Lappel coat on 1½ yard of ¾ or 58½ inches of broad cloth. Lay your back seam to the double edge of the cloth, and the coat will come out complete.

PLATE XI.

Is a Laydown of the Boys' wrapper coat—the 12th size forepart with the 8th size back, and the 12th size forepart will follow, and the 12th size back and 8th size forepart two sleeves and cape from the width. The cape will come, without a seam, out of the crease.

PLATE XII.

A Laydown of Countrymen's Long Jacket. The 3rd and 5th forepart, and reverse them every cut.

PLATE XIII.

Is a Laydown for a Man's Stable Jacket, on 27 inch stuff. The foreparts and backs will follow each other, and three sleeves will come out of the width.

PLATE XIV.

THIS is a Laydown of the 3rd and 5th sizes of Men's Breeches on 27 inch cord or cassimere. The quantity given will make the Breeches complete.

Men's cloth or cord trowsers will lay down the same way, by bringing the bottom of the forepart half way down the seat of the hindpart, and the stuff will come out complete and make them handsome.

PLATE XV.

A Man's Fustian or Duck trowsers.

PLATE XVI.

Is a Laydown of Boy's 8th and 12th sizes. Fustian or Duck trowsers. You will have twice as many of the 12th size as you will have of the 8th sizes. The trowsers will fit up close. The 9th and 11th sizes will come out in the same way, and the 10th in the same as by themselves.

PLATE XVII.

Is a Laydown of the 3rd. and 5th. size Denmark Dresses the trowsers, foreparts, backs, and 5th. size sleeves will come as laid down. The 3rd. sleeves, cuffs, and other finishings must come at the end; and other sizes in proportion.

PLATE XVIII.

Is a Laydown of four sizes of Men's Waistcoats, that is from the 2nd. to the 5th. with collars, welts, facings, &c. and the 4th. with a rolling collar. The backs must be fitted to them, to make them regular, (see plate IV. which will serve as a correct guide.) The quantities are given in the table of waistcoats.

PLATE XIX.

A LAYDOWN of Boy's Millwrights' Frocks. They are generally made of 27 Inch Fustian. A piece will come off the side of the foreparts which will make the facings and cuffs. Two Backs or four sleeves will come out of the width. There must be three buttons in the bosom, and a cuff and two buttons at the sleeve hand.

PLATE XX.

A LAYDOWN of Men's Millwrights Frocks 27 inch stuff. The foreparts, all sizes, will take the

whole width of the stuff: the difference in size must be made in the backs. The pieces that come out of the back, will make cuffs and facings. The width will give these sleeves. The quantity given in the table will make the frock handsome.

PLATE XXI.

Is a Laydown of the 4th. size (or 52 inch) lady's gig coat, which are generally made with one cape, and are bound if made of Bath coating.

PLATE XXII.

THE 28 inch Corsets. This will answer for both kinds. They are cut whole in front.

PLATE XXIII.

THE 24 inch Girls' Corsets, according to the description in the instructions.

PLATE XXIV.

THIS is a Laydown of two twenty nail cloaks. When you have opened the piece, (which will be 2 yards or 72 inches wide) with the piece to the left hand, there mark your pivot, then carry your line round, to form the bottom of the cloak. You lose $2\frac{1}{4}$ inches (from B to C,) to bring the cloak the right length in front at the bottom—then take from D to E at the top to form the

neck, which will be 36 inches round; and as you increase in length you must shift the front further round—this you may do from 20 to 23 nails, which is the length generally required.

PLATE XXV.

Is a Laydown of the half circle boat cloak. First mark your pivot $67\frac{1}{2}$ inches from the bottom of your piece, which lies to your left hand, and the end to your right. Call the pivot A the bottom of the cloak at the back or centre seam B, then carry your line to C, which is the front—then hollow out 9 inches in the back and 12 in front from D to E, which will give the neck 36 inches in the round. Plait in the neck 6 inches on each side, and make the collar 12 inches long on each side, or 24 together.

Frontispiece.

A man's single breasted Frock Coat, with the measuring lines. From 1 to 2 is the length of the waist, from 2 to 3, the full length of the coat from 4 to 5, half the width of the back, between the shoulders from 5 to 6, to the elbow—from 6 to 7, the full length of the sleeve—from 5 to 8, from point to point, 9 the small of the sleeve—10, half round the breast, 11, half round the waist. The pivot is a third, and the sixth of a third, of the breast measure—the proof line, two thirds of the breast from the back seam to the front of the sye—the two balance lines the same length.

INDEX.

	Page.		Page.
Gentlemen's Gig or Box Coats...	2	Boys Hussar Suits	74
Mens Duffell Coats.....	4	Mens Sleeved Waistcoats	76
Mens Hushing Coats.....	6	Mens Single Bd. Waistcoats ...	78
Watchmens Coats	8	Mens Double Bd. Waistcoats ...	80
Mens Surtouts	10	Boys Single Bd. Waistcoats ...	82
Mens Lappel Coats	12	Boys Millwrights Frocks	84
Mens Lappel Coatees	14	Mens Millwrights Frocks	86
Mens Single Bd. Frock Coats..	16	Mens Round Frocks	88
Mens Single Breasted Coatees...	18	Mens Waggoners Frocks Full	89
Boys Duffell Coats	20	worked	
Boys Surtouts	22	Boys waggoners Frocks	90
Boys Wrapper Coats	24	Mens Red Baize Shirts	91
Boys Lappel Coats	26	Mens Striped Shirts	92
Boys Lappel Coatees	28	Mens White Cotton Shirts ...	92
Boys Single Bd. Frock Coats ..	30	Mens Irish Linen Shirts	93
Boys Single Breasted Coatees..	32	Boys' Shirts	94
Seamens Pca Jackets	34	Ladies' Gig Coats.....	96
Seamens Monkey Jackets	36	Ladies' Corsets.....	98
Seamens Hushing Trowsers....	38	Ladies' Shifts	99
Shepherds Jackets	40	Girls' Corsets	100
Brewers Jackets	42	Girls' Shifts.....	101
Countrymens Long Jackets ..	44	Ladies' Cloaks	103
Mens Stable Jackets.....	46	Girls' Cloaks.....	103
Mens Linsey Jackets	48	Womens' Gowns.....	104
Mens Settees or Double Bd.	50	Girls' Gowns	106
Jackets.....		Mens' Cambleh Boat Cloaks...	108
Boys Long Jackets	52	Mens' Knee Caps.....	110
Boys Stable Jackets.....	54	Mens' Long Gaiters.....	111
Boys Settees or Double Bd. Jac-	56	Mens Short Gaiters.....	112
kets.....		Spanish Coats	113
Mens Breeches	58	Capoas	115
Boys Breeches	60	Negroes' Jackets & Trowsers..	117
Mens Fine Trowsers	62	Negro Women's Bedgowns....	119
Mens Duck or Fustian Trowsers	64	Negro Women's Petticoats.....	120
Seamens Cloth Trowsers	66	Negro Girls' Bedgowns	120
Boys Fine Trowsers	68	Negro Girls' Petticoats.....	121
Boys Duck or Fustian Trowsers	70	Firemen's Coats.....	121
Boys Denmark or Rifle Dresses.	72		

MASON, Printer.



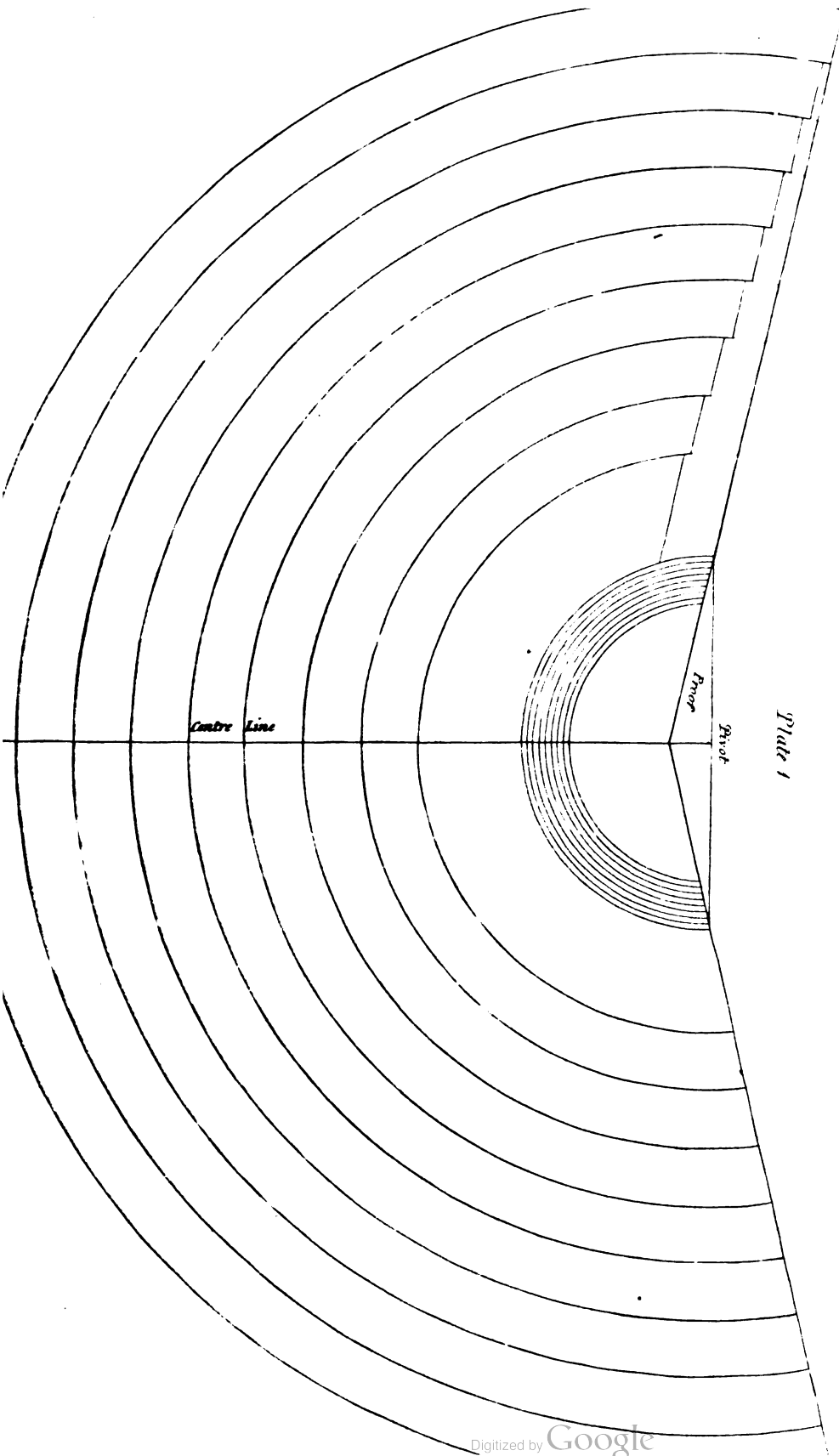


Plate 1

INDEX.

Page.		Page.	
Gentlemen's Gig or Box Coats...	2	Boys Hussar Suits	74
Mens Duffell Coats.....	4	Mens Sleeved Waistcoats	76
Mens Hushing Coats.....	6	Mens Single Bd. Waistcoats ..	78
Watchmens Coats	8	Mens Double Bd. Waistcoats ...	80
Mens Surtouts	10	Boys Single Bd. Waistcoats....	82
Mens Lappel Coats	12	Boys Millwrights Frocks	84
Mens Lappel Coatees	14	Mens Millwrights Frocks	86
Mens Single Bd. Frock Coats..	16	Mens Round Frocks	88
Mens Single Breasted Coatees...	18	Mens Waggoners Frocks Full	89
Boys Duffell Coats	20	worked	89
Boys Surtouts	22	Boys waggoners Frocks	90
Boys Wrapper Coats	24	Mens Red Baize Shirts	91
Boys Lappel Coats	26	Mens Striped Shirts.....	92
Boys Lappel Coatees	28	Mens White Cotton Shirts ...	92
Boys Single Bd. Frock Coats ..	30	Mens Irish Linen Shirts	93
Boys Single Breasted Coatees..	32	Boys' Shirts	94
Seamens Pca Jackets	34	Ladies' Gig Coats	96
Seamens Monkey Jackets ...	36	Ladies' Corsets.....	98
Seamens Hushing Trowsers....	38	Ladies' Shifts	99
Shepherds Jackets	40	Girls' Corsets	100
Brewers Jackets	42	Girls' Shifts.....	101
Countrymens Long Jackets ..	44	Ladies' Cloaks.....	103
Mens Stable Jackets.....	46	Girls' Cloaks.....	103
Mens Linsey Jackets	48	Womens' Gowns.....	104
Mens Settees or Double Bd.	50	Girls' Gowns	106
Jackets.....	50	Mens' Cambleh Boat Cloaks...	108
Boys Long Jackets	52	Mens' Knee Caps.....	110
Boys Stable Jackets.....	54	Mens' Long Gaiters.....	111
Boys Settees or Double Bd. Jac-	56	Mens Short Gaiters.....	112
kets.....	56	Spanish Coats	113
Mens Breeches	58	Capoas	115
Boys Breeches	60	Negroes' Jackets & Trowsers..	117
Mens Fine Trowsers	62	Negro Women's Bedgowns....	119
Mens Duck or Fustian Trowsers	64	Negro Women's Petticoats....	120
Seamens Cloth Trowsers	66	Negro Girls' Bedgowns.....	120
Boys Fine Trowsers	68	Negro Girls' Petticoats.....	121
Boys Duck or Fustian Trowsers	70	Firemen's Coats....	121
Boys Denmark or Rifle Dresses.	72		

MASON, Printer.



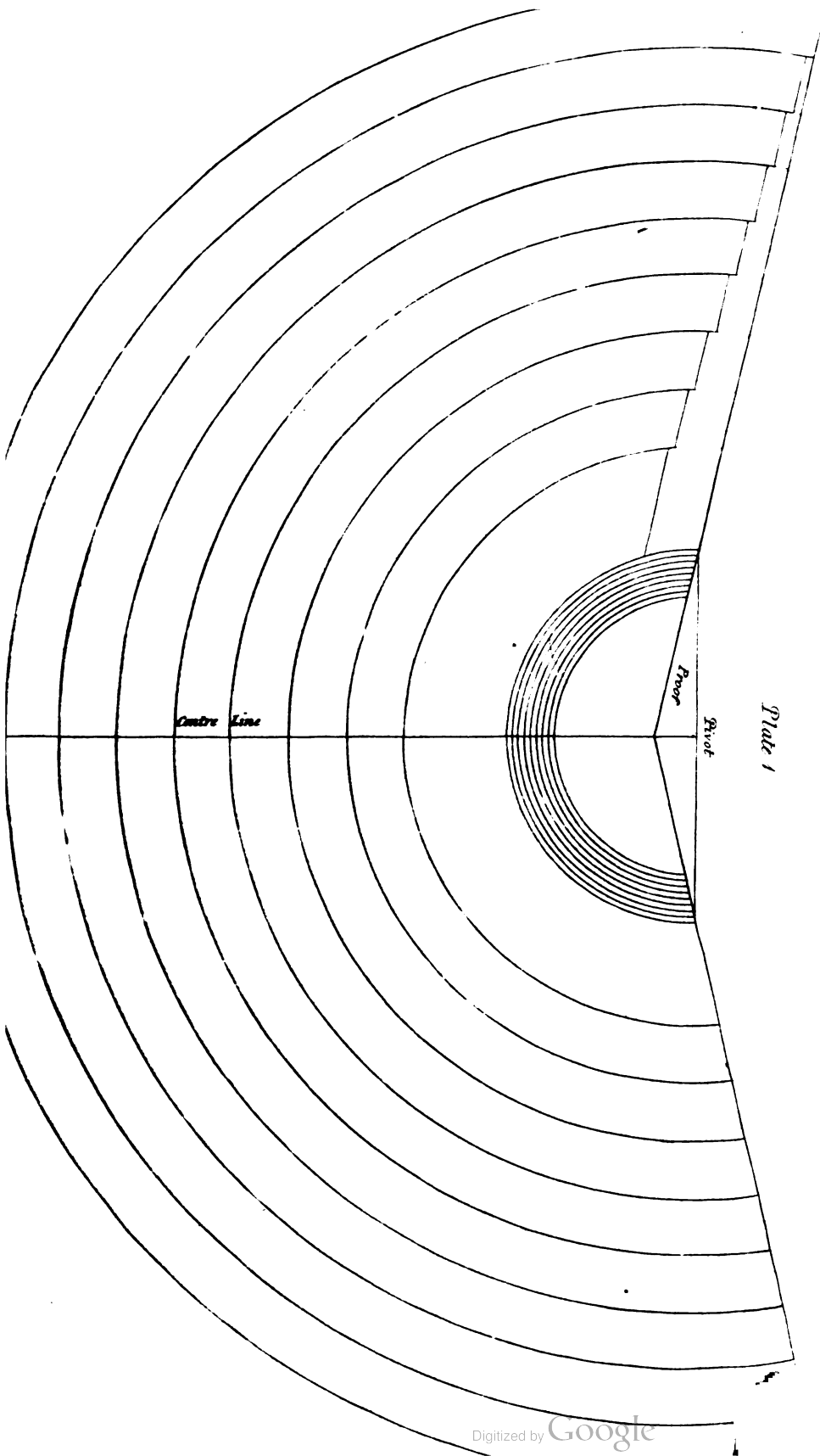


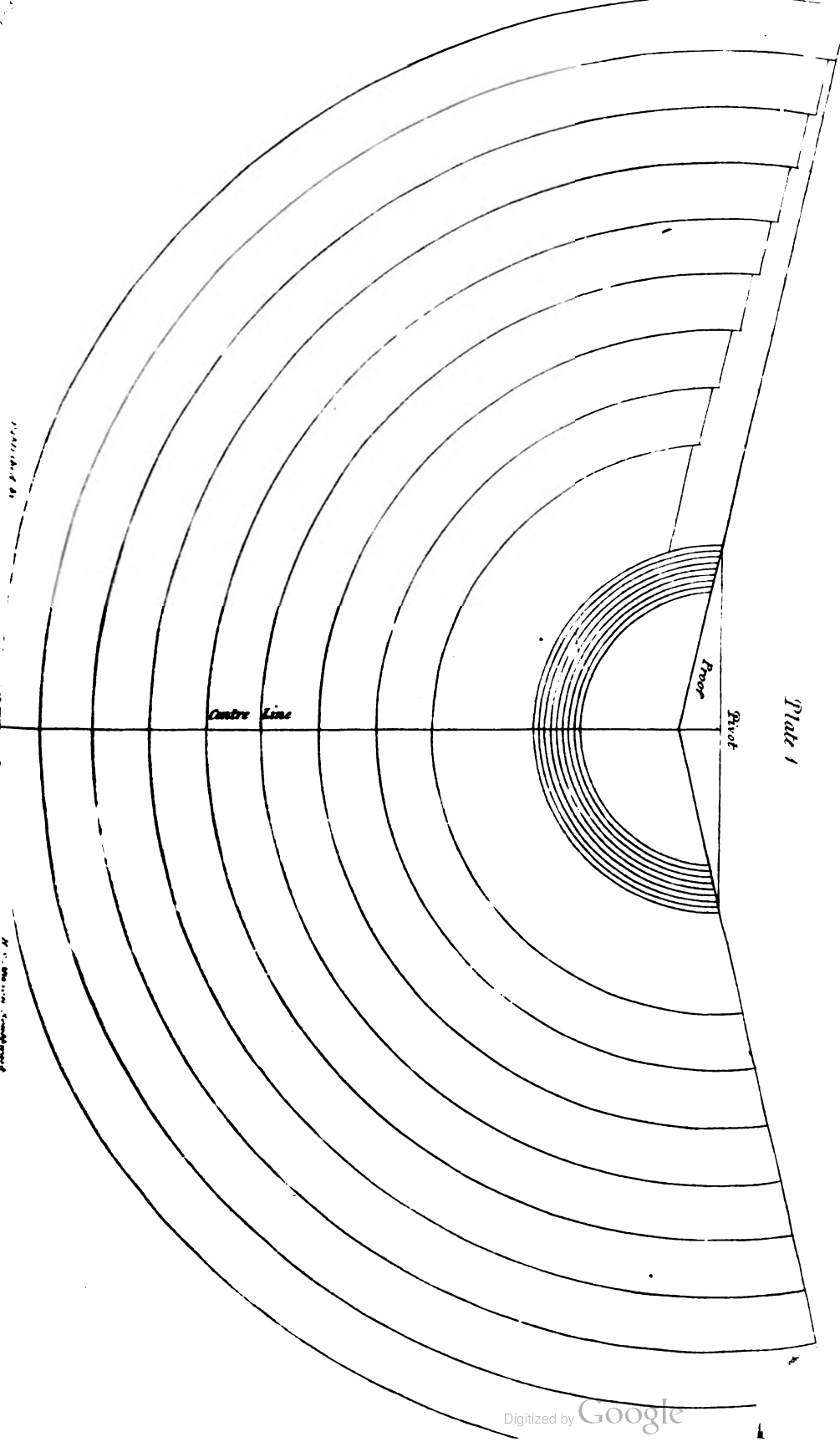
Plate 1

INDEX.

Page.		Page.	
Gentlemen's Gig or Box Coats...	2	Boys Hussar Suits	74
Mens Duffell Coats.....	4	Mens Sleeved Waistcoats	76
Mens Hushing Coats.....	6	Mens Single Bd. Waistcoats ..	78
Watchmens Coats	8	Mens Double Bd. Waistcoats ...	80
Mens Surtouts	10	Boys Single Bd. Waistcoats....	82
Mens Lappel Coats	12	Boys Millwrights Frocks	84
Mens Lappel Coatees	14	Mens Millwrights Frocks	86
Mens Single Bd. Frock Coats..	16	Mens Round Frocks	88
Mens Single Breasted Coatees...	18	Mens Waggoners Frocks Full	89
Boys Duffell Coats	20	worked	
Boys Surtouts	22	Boys waggoners Frocks	90
Boys Wrapper Coats	24	Mens Red Baize Shirts	91
Boys Lappel Coats	26	Mens Striped Shirts.....	92
Boys Lappel Coatees	28	Mens White Cotton Shirts ...	92
Boys Single Bd. Frock Coats ..	30	Mens Irish Linen Shirts	93
Boys Single Breasted Coatees..	32	Boys' Shirts	94
Seamens Péea Jackets	34	Ladies' Gig Coats.....	96
Seamens Monkey Jackets	36	Ladies' Corsets.....	98
Seamens Hushing Trowsers....	38	Ladies' Shifts	99
Shepherds Jackets	40	Girls' Corsets	100
Brewers Jackets	42	Girls' Shifts.....	101
Countrymens Long Jackets ..	44	Ladies' Cloaks	103
Mens Stable Jackets.....	46	Girls' Cloaks.....	103
Mens Linsey Jackets	48	Womens' Gowns.....	104
Mens Settees or Double Bd.	50	Girls' Gowns	106
Jackets.....		Mens' Cambleh Boat Cloaks...	108
Boys Long Jackets	52	Mens' Knee Caps.....	110
Boys Stable Jackets.....	54	Mens' Long Gaiters.....	111
Boys Settees or Double Bd. Jac-	56	Mens Short Gaiters.....	112
kets		Spanish Coats	113
Mens Breeches	58	Capoas	115
Boys Breeches	60	Negroes' Jackets & Trowsers..	117
Mens Fine Trowsers	62	Negro Women's Bedgowns....	119
Mens Duck or Fustian Trowsers	64	Negro Women's Petticoats.....	120
Seamens Cloth Trowsers	66	Negro Girls' Bedgowns	120
Boys Fine Trowsers	68	Negro Girls' Petticoats.....	121
Boys Duck or Fustian Trowsers	70	Firemen's Coats.....	121
Boys Denmark or Rifle Dresses.	72		

MASON, Printer.





INDEX.

	Page.		Page.
Gentlemen's Gig or Box Coats...	2	Boys Hussar Suits	74
Mens Duffell Coats.....	4	Mens Sleeved Waistcoats	76
Mens Hushing Coats.....	6	Mens Single Bd. Waistcoats ...	78
Watchmens Coats	8	Mens Double Bd. Waistcoats ...	80
Mens Surtouts	10	Boys Single Bd. Waistcoats....	82
Mens Lappel Coats	12	Boys Millwrights Frocks	84
Mens Lappel Coatees	14	Mens Millwrights Frocks	86
Mens Single Bd. Frock Coats..	16	Mens Round Frocks	88
Mens Single Breasted Coatees...	18	Mens Waggoners Frocks Full	
Boys Duffell Coats	20	worked	89
Boys Surtouts	22	Boys waggoners Frocks	90
Boys Wrapper Coats	24	Mens Red Baize Shirts	91
Boys Lappel Coats	26	Mens Striped Shirts.....	92
Boys Lappel Coatees	28	Mens White Cotton Shirts ...	92
Boys Single Bd. Frock Coats ..	30	Mens Irish Linen Shirts	93
Boys Single Breasted Coatees..	32	Boys' Shirts	94
Seamens Pea Jackets	34	Ladies' Gig Coats.....	96
Seamens Monkey Jackets ...	36	Ladies' Corsets.....	98
Seamens Hushing Trowsers....	38	Ladies' Shifts	99
Shepherds Jackets	40	Girls' Corsets	100
Brewers Jackets	42	Girls' Shifts.....	101
Countrymens Long Jackets ..	44	Ladies' Cloaks.....	103
Mens Stable Jackets.....	46	Girls' Cloaks.....	103
Mens Linsey Jackets	48	Womens' Gowns.....	104
Mens Settees or Double Bd.		Girls' Gowns	106
Jackets.....	50	Mens' Cambleh Boat Cloaks...	108
Boys Long Jackets	52	Mens' Knee Caps.....	110
Boys Stable Jackets.....	54	Mens' Long Gaiters.....	111
Boys Settees or Double Bd. Jac-		Mens Short Gaiters.....	112
kets.....	56	Spanish Coats	113
Mens Breeches	58	Capoas	115
Boys Breeches	60	Negroes' Jackets & Trowsers..	117
Mens Fine Trowsers	62	Negro Women's Bedgowns....	119
Mens Duck or Fustian Trowsers	64	Negro Women's Petticoats.....	120
Seamens Cloth Trowsers	66	Negro Girls' Bedgowns.....	120
Boys Fine Trowsers	68	Negro Girls' Petticoats.....	121
Boys Duck or Fustian Trowsers	70	Firemen's Coats.....	121
Boys Denmark or Rifle Dresses.	72		

MASON, Printer.



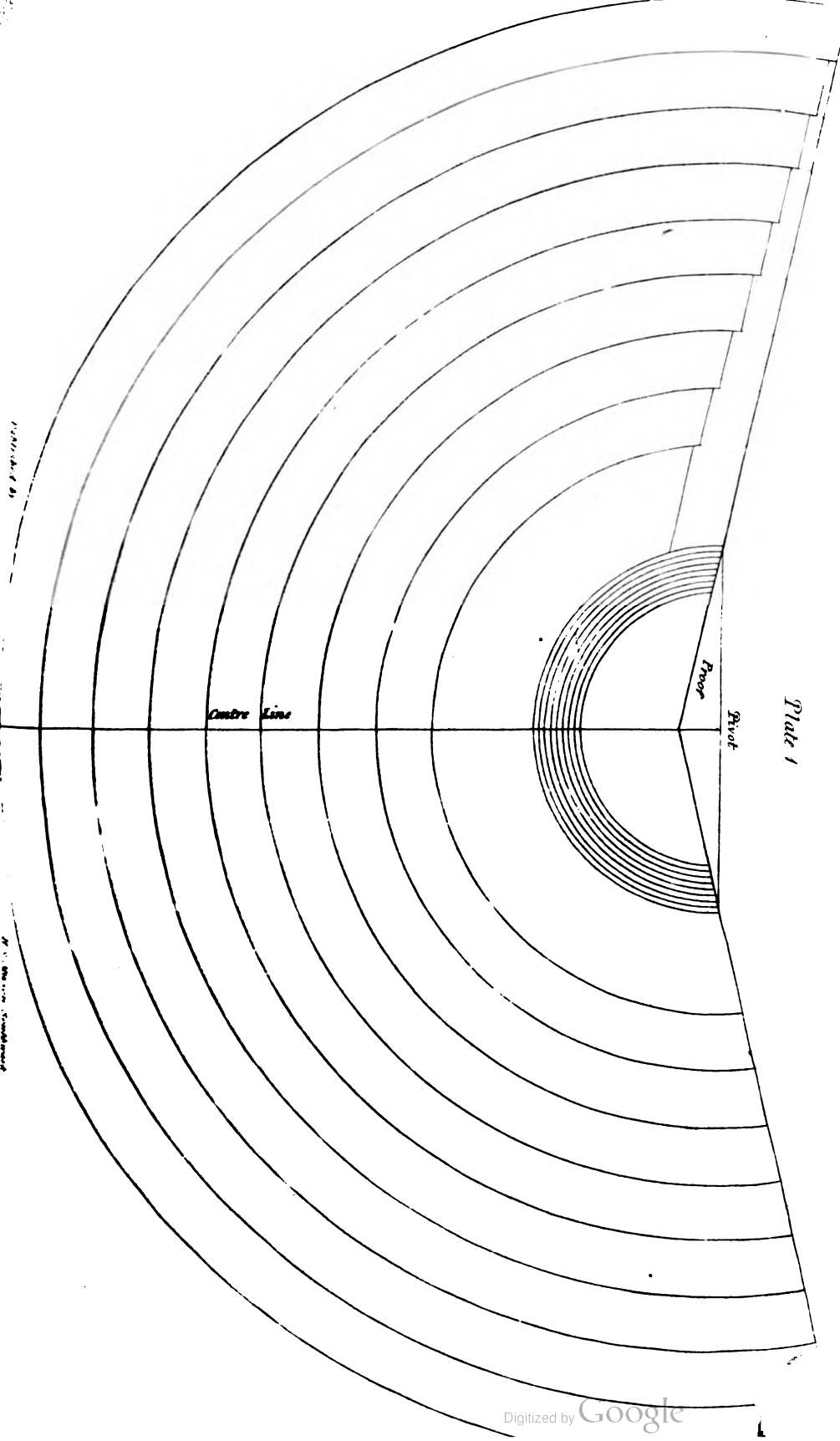


Plate 2.

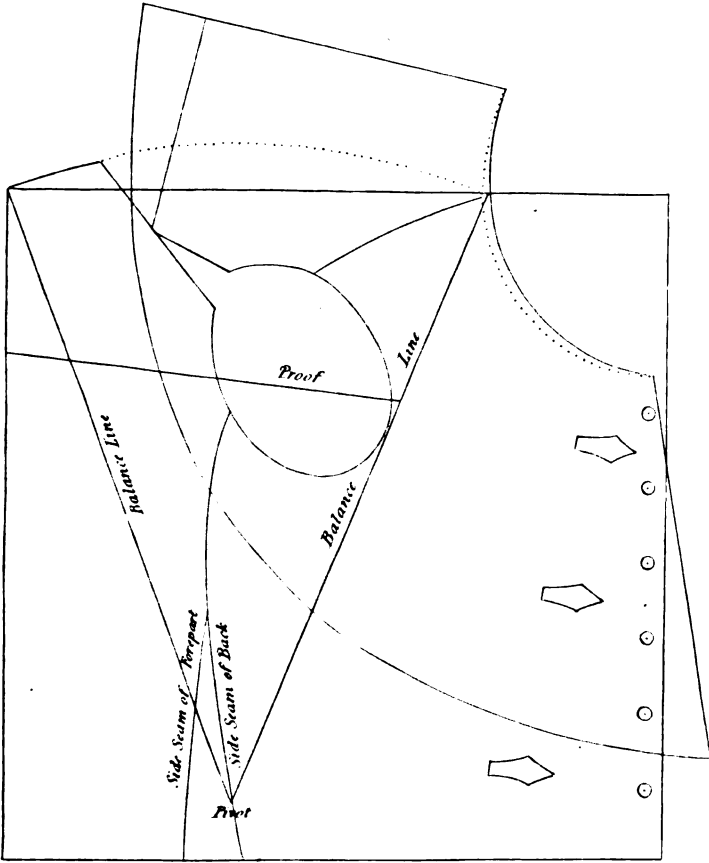


Plate 3

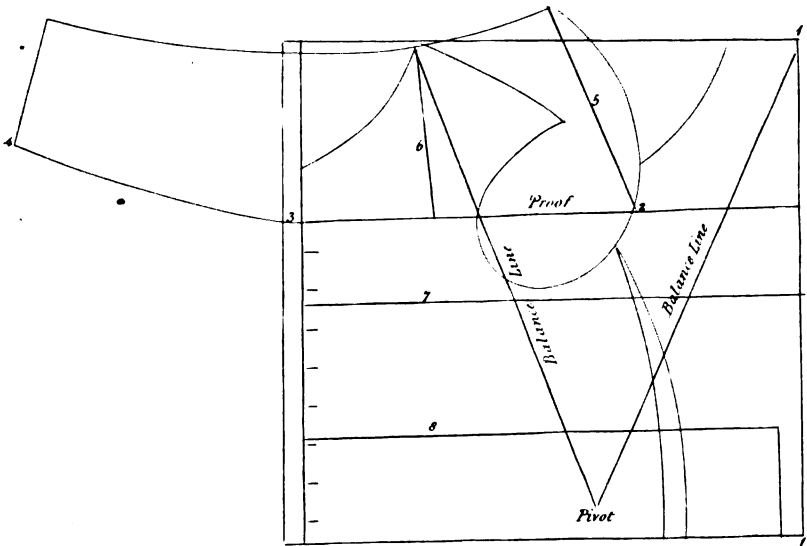
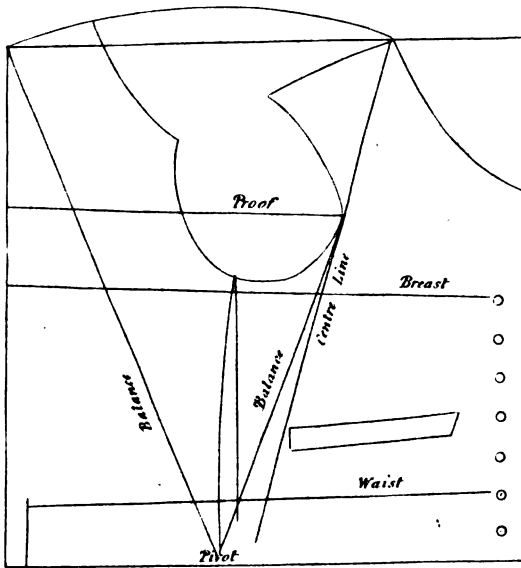


Plate 4.



Pivot
x

Plate 5.

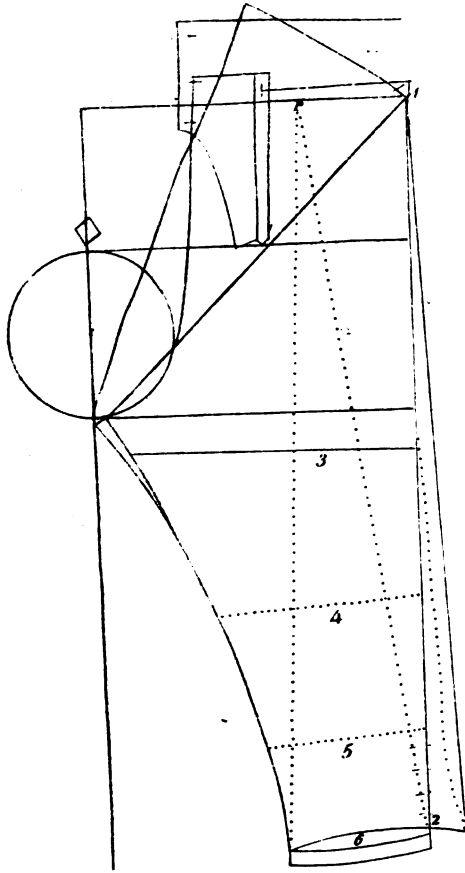
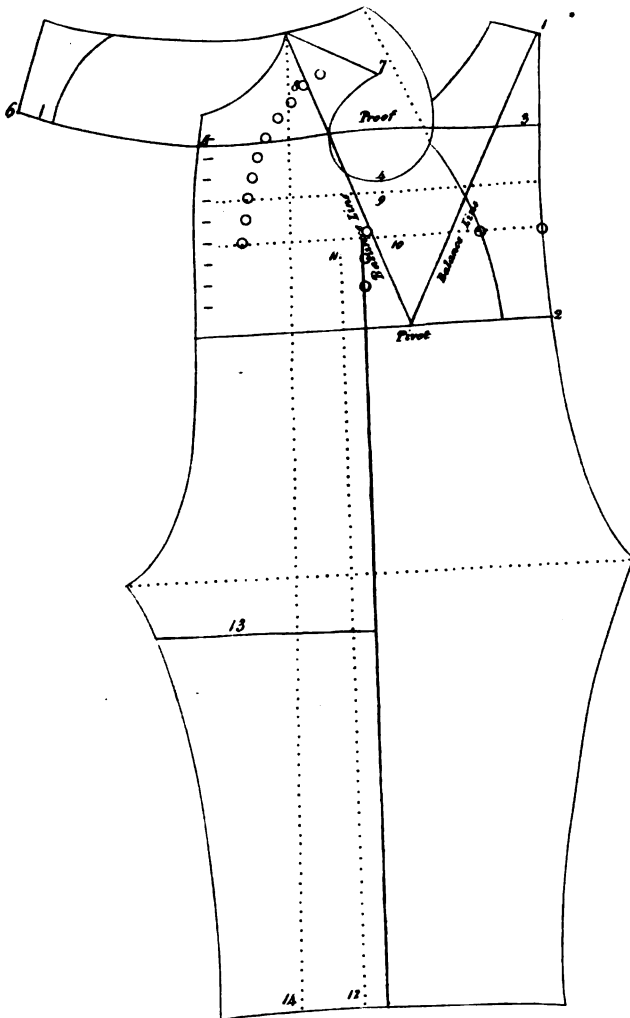


Plate 6.



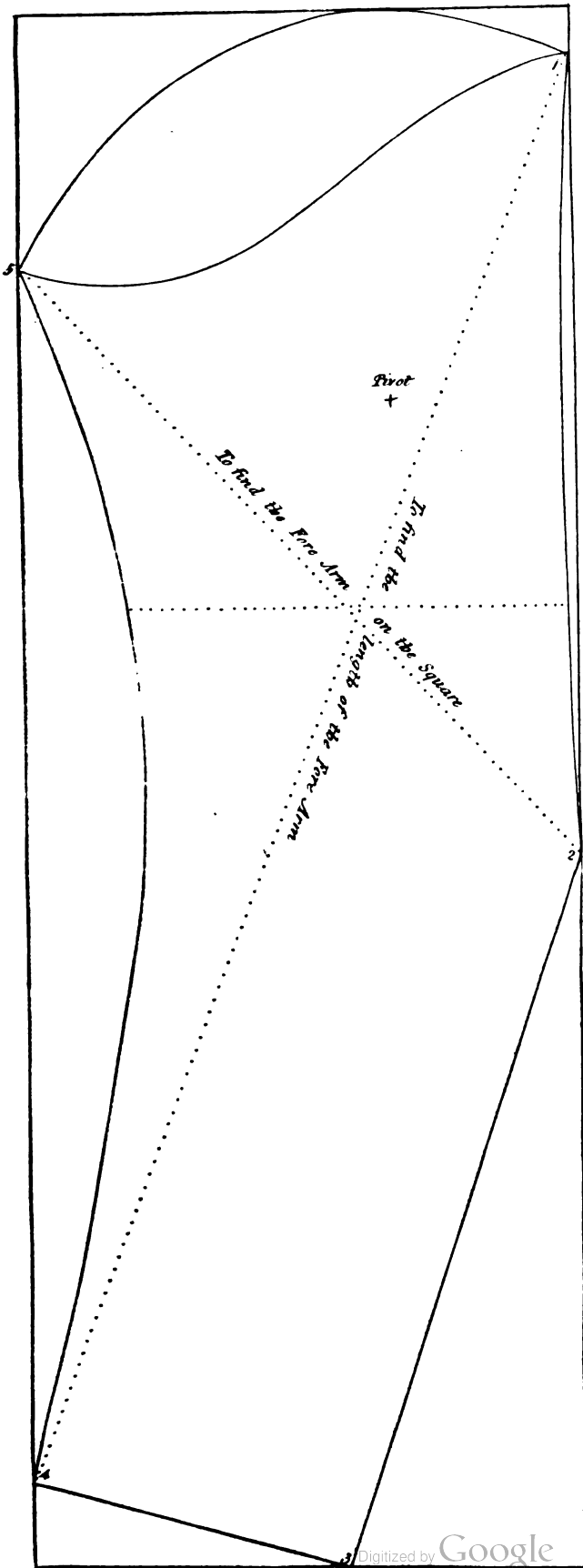
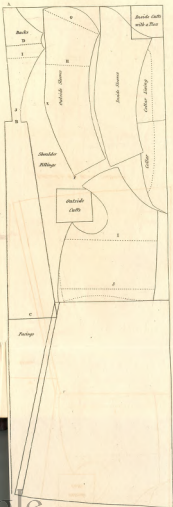


Plate 9.



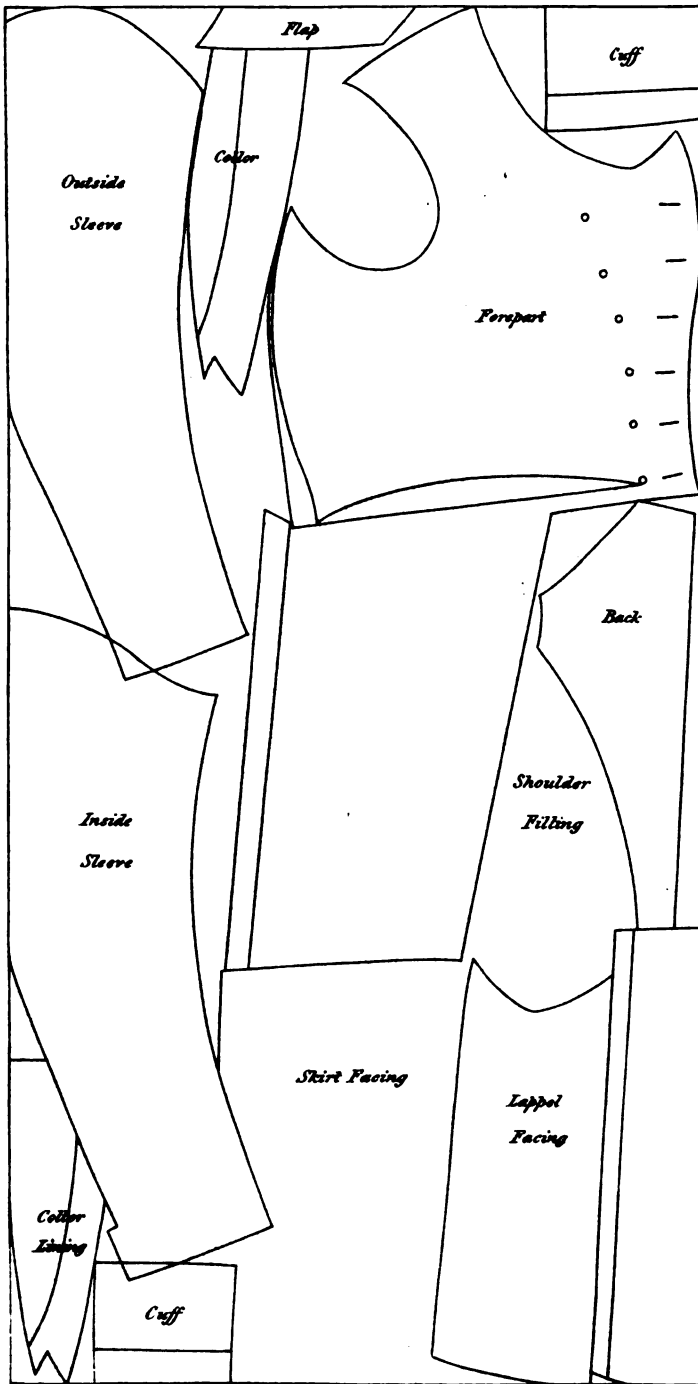


Plate II.

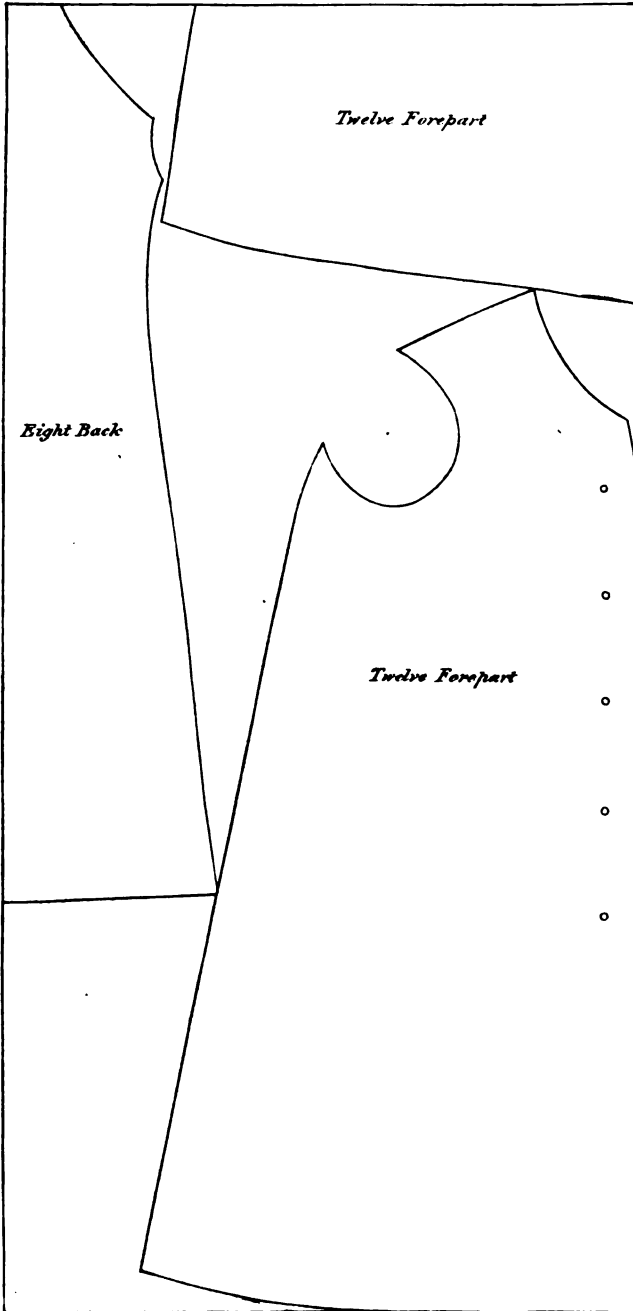


Plate 12.

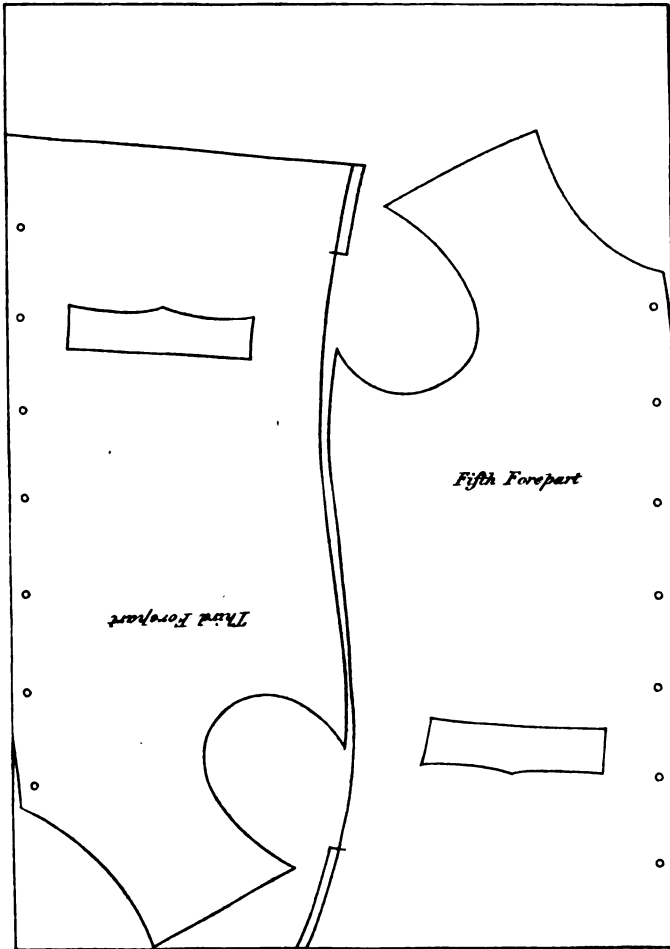
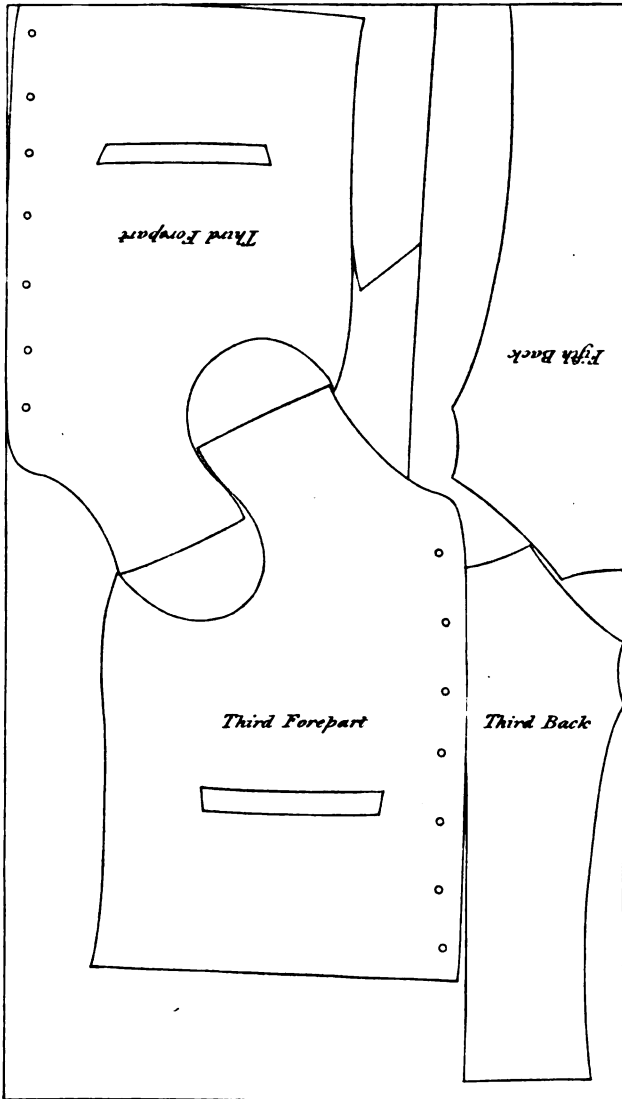
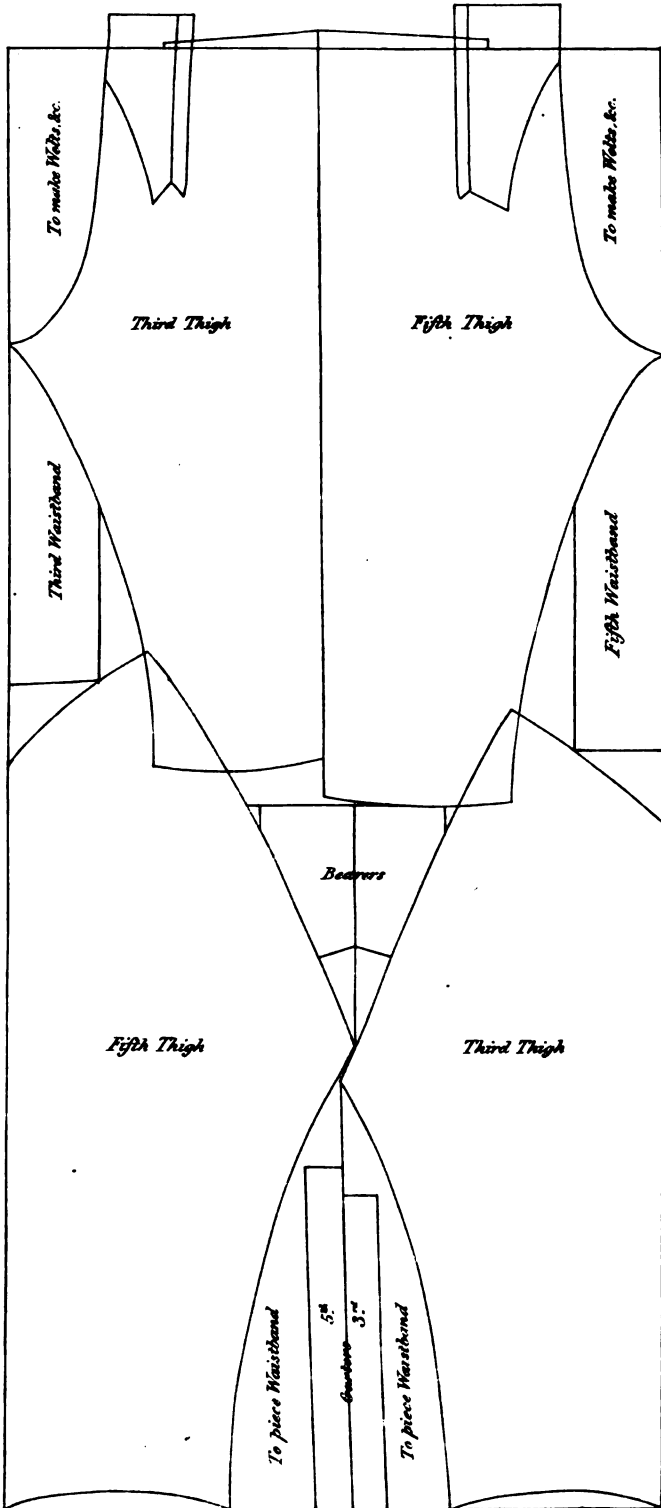
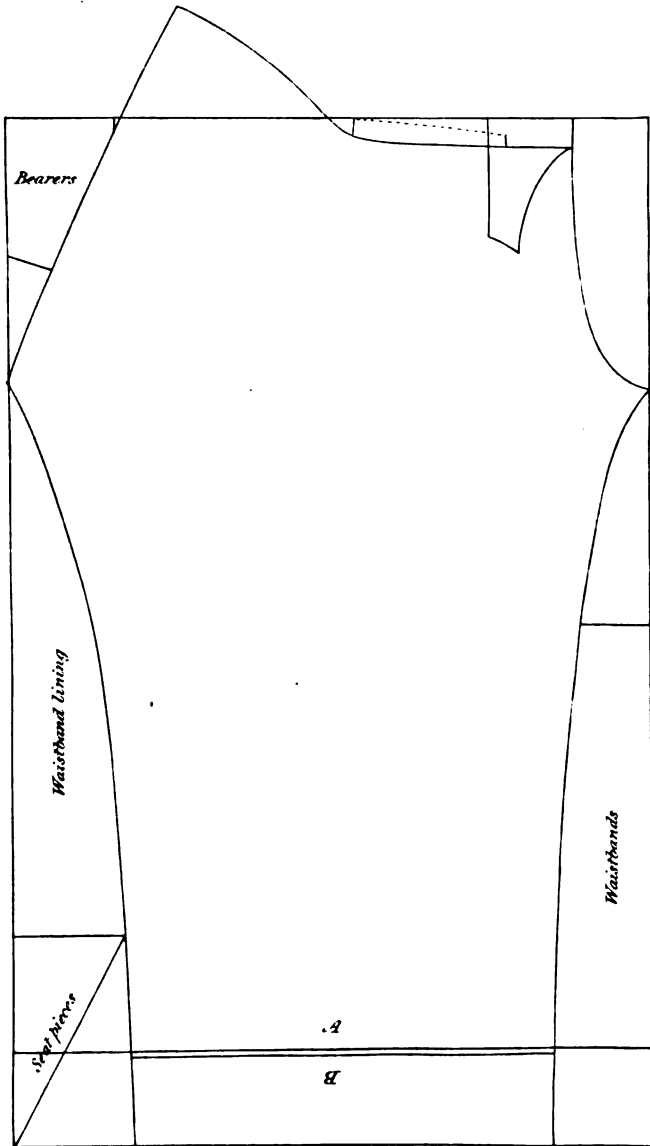
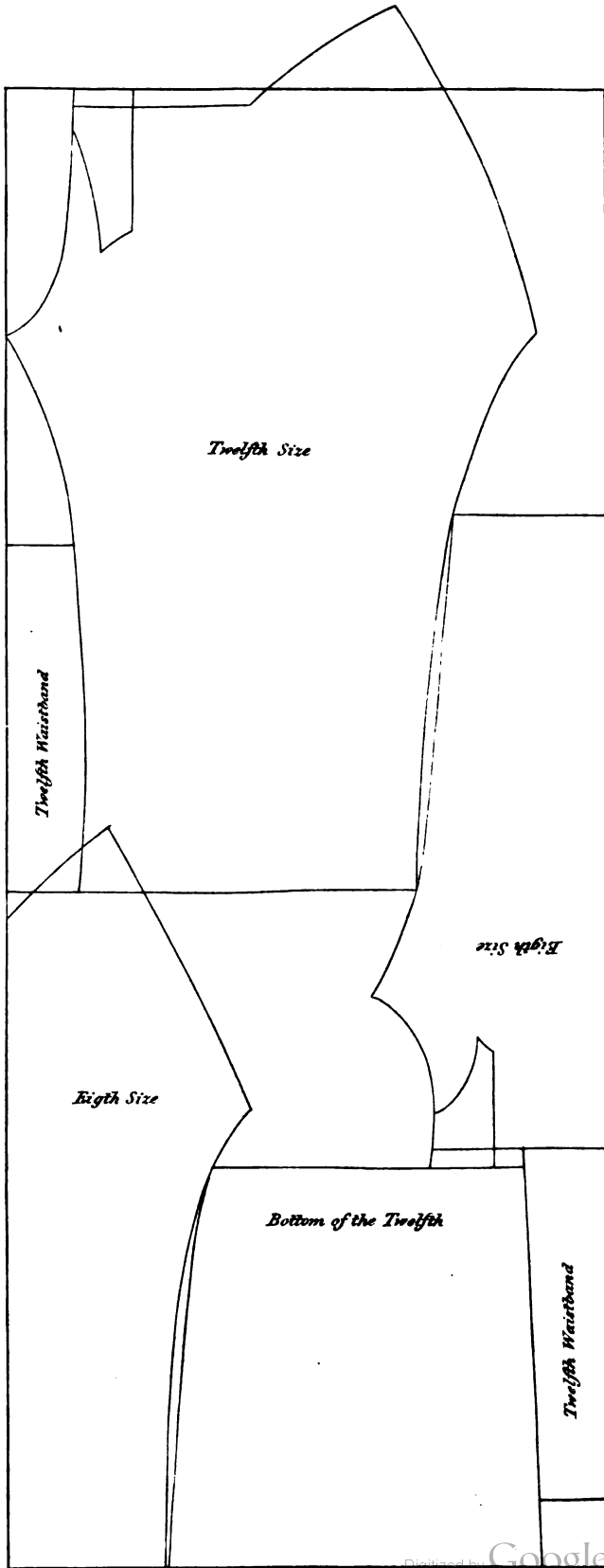


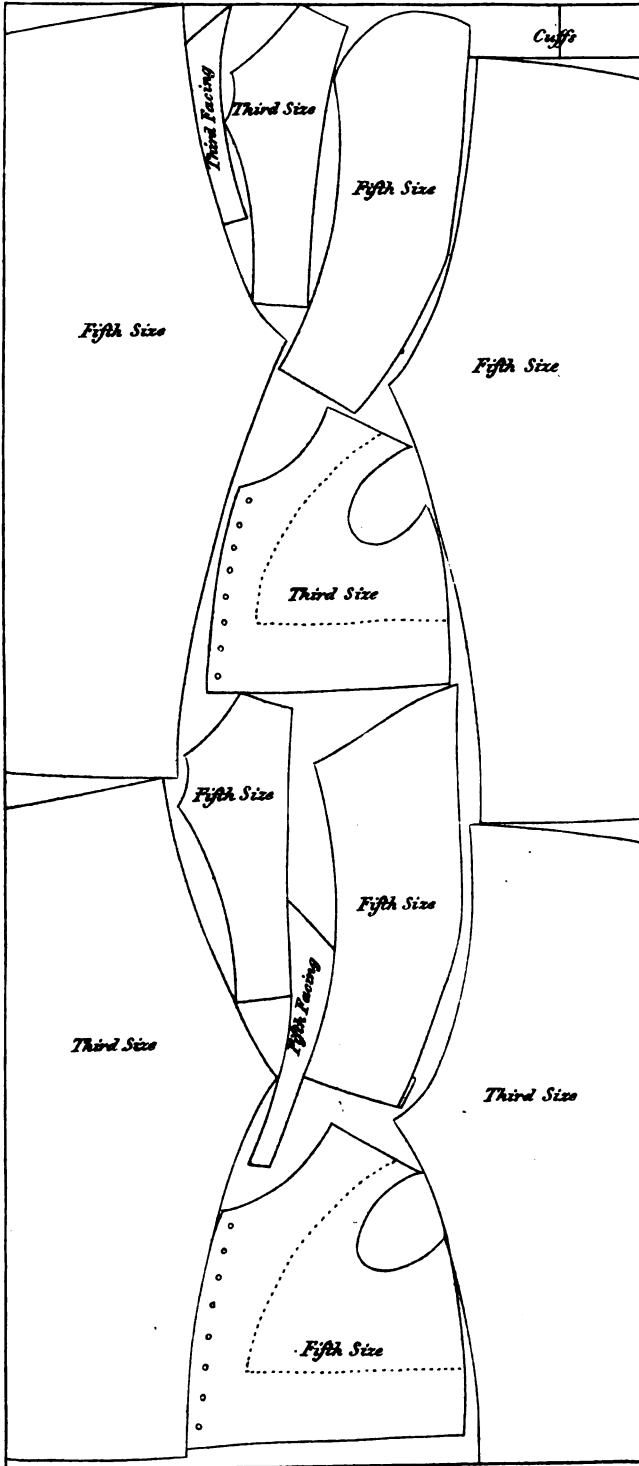
Plate 13.

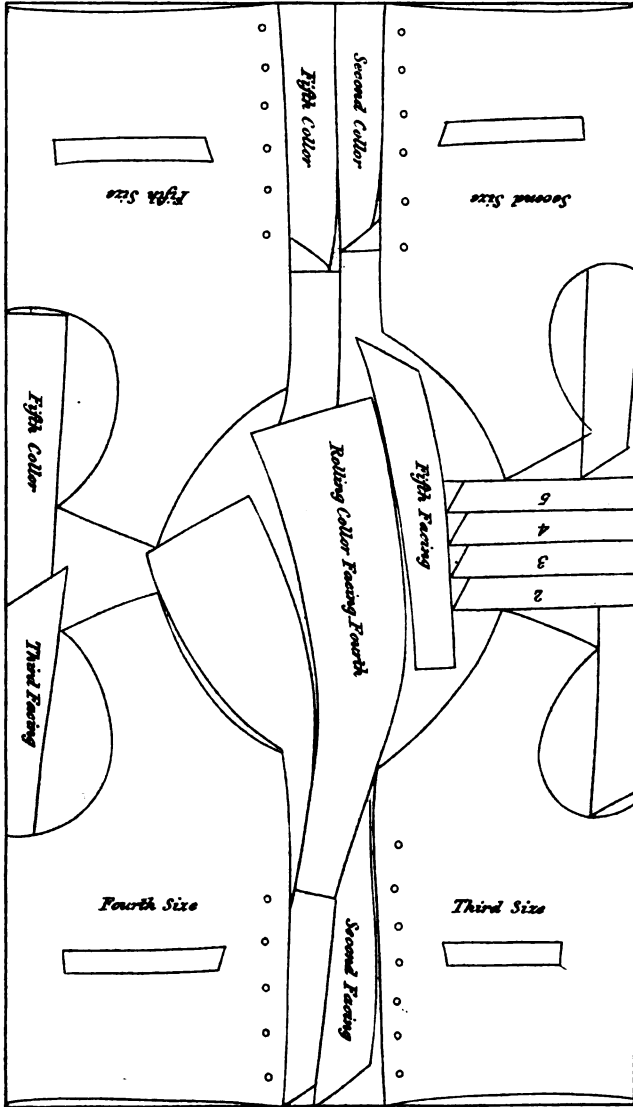


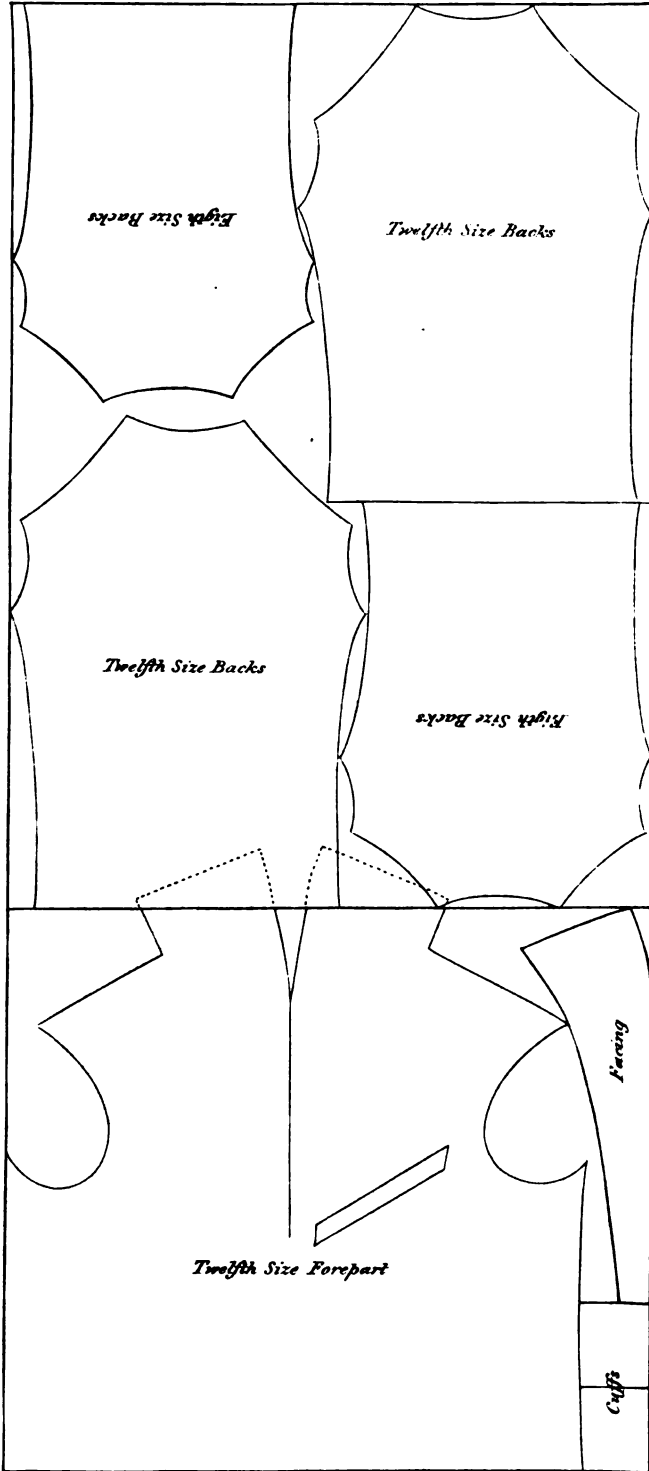












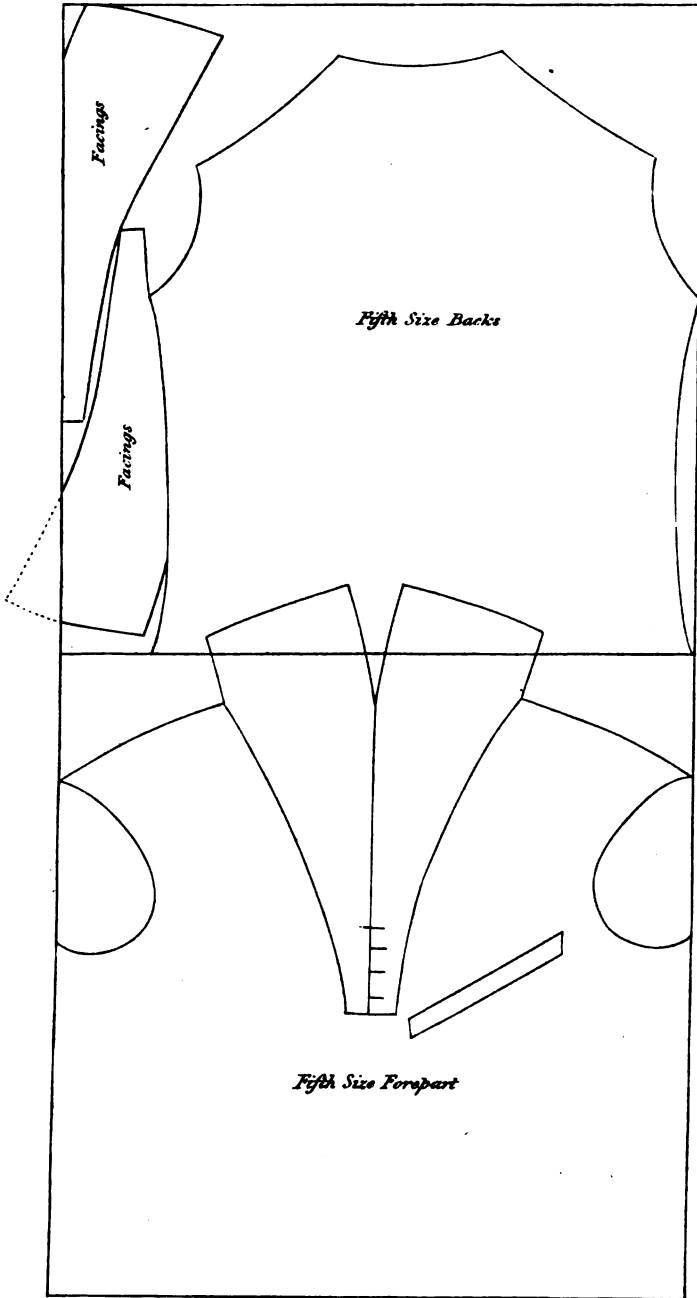
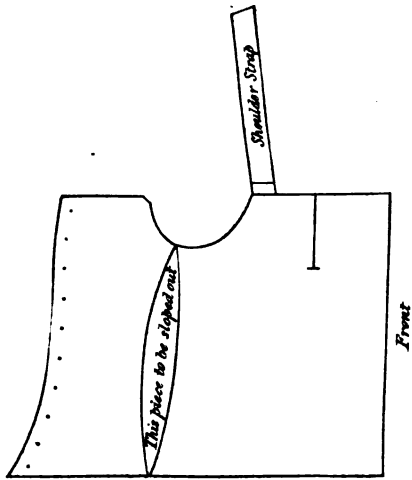
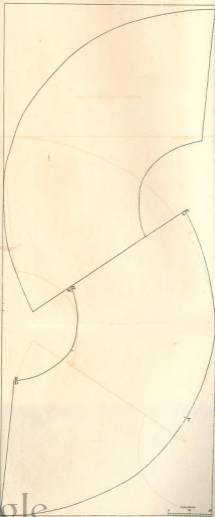
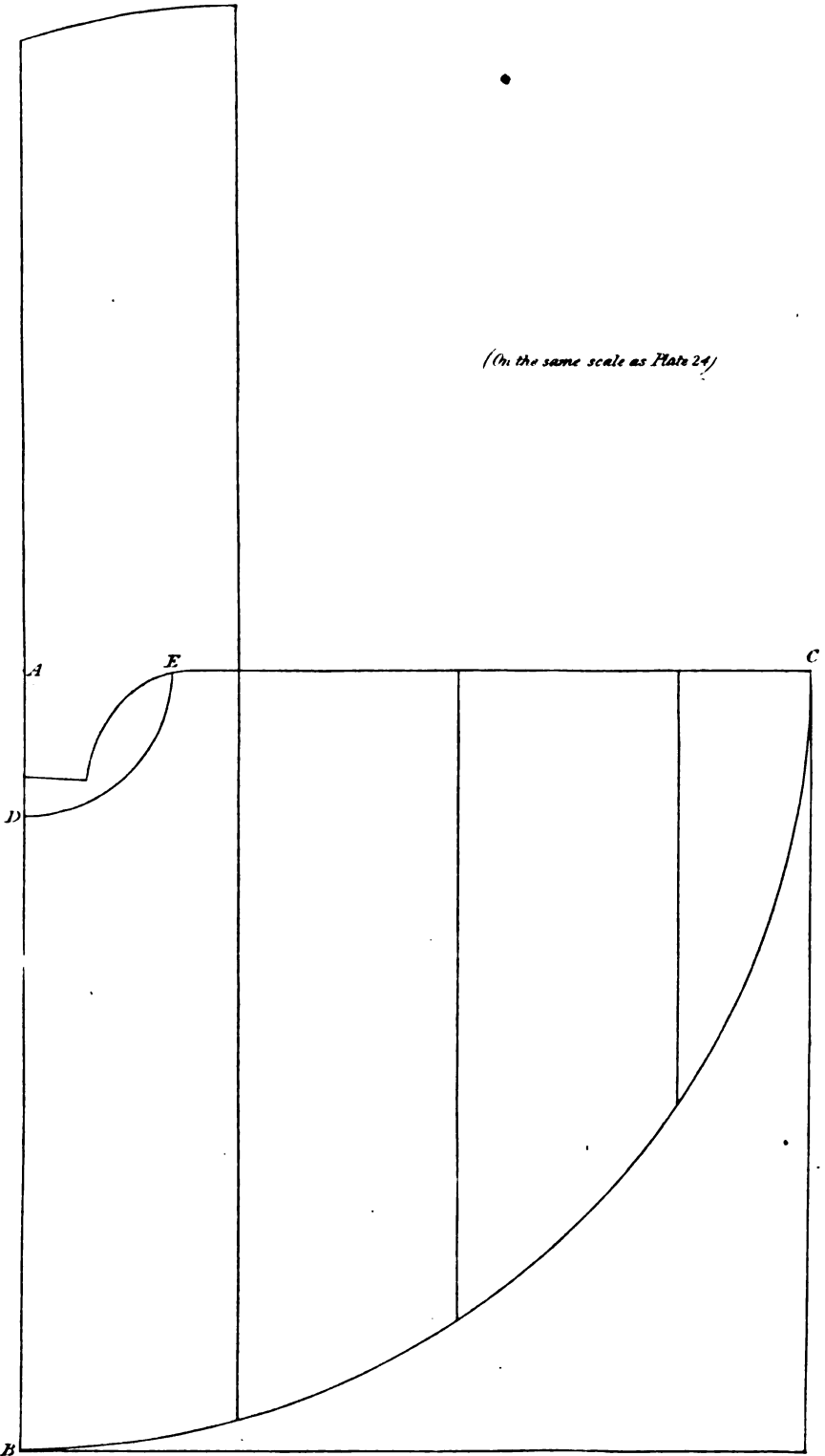


Plate 23.







(On the same scale as Plate 24)